

# 73<sup>rd</sup> Convention of the LCMS Kansas District



## Convention Business

May 25, 2018





# 73<sup>rd</sup> Convention of the LCMS Kansas District June 7 - 9, 2018

## INDEX

<b>Section 1: Convention Schedule (updated)</b> .....	3
<b>Keypad Instructions</b> .....	5
<b>Section 2: Convention Voting Delegates</b> .....	8
<b>Section 3: Convention Ballot (updated)</b> .....	11
<b>Nomination Bios (updated)</b> .....	12
<b>Section 4: Convention Resolutions Index</b> .....	14
<b>Omnibus Resolutions</b> .....	61

## INSTRUCTIONS FOR NAVIGATING THE WORKBOOK

**First things first:** This workbook should be opened with Adobe Acrobat or Reader. If you aren't seeing some of the features described in these instructions, it may be because you've opened the document with another program.

**Basic navigation:** On the left side of your document is a Bookmark Pane, which contains links (bookmarks) to the various sections of the workbook. When you click on a bookmark, the Document Pane displays that page. For example, click on Workbook Index in the Bookmark Pane, and the Workbook Index page is displayed. Using the bookmarks will allow you to move quickly through the workbook. (Has the pane disappeared? Look for the little bookmark icon on the far left, right over the paper clip, to bring it back.)

**Additional links:** Several sections have Index pages with additional links to pages within the section. These links are identified by a red underline. Some examples:

- In the Workbook Index, Speaker Bio is underlined in red. If you click on the underlined text, the Speaker Bio will be displayed.
- In Section 5, Nominations Index, the page number following each nominee's name is underlined in red and links to that nominee's biography (all candidates are listed alphabetically).

**Returning to a previous page:** When you click on a link in the document, you can't return to the original page, unfortunately. This is where the bookmark pane comes in handy. For example, if you finish reading the District Secretary bios in Section 5 and want to go back to the Nomination Index, just look to the left in the Bookmark Pane and click on the Nomination Index. This is much easier than scrolling back and forth in the document trying to find a page.

## 73<sup>rd</sup> LCMS KANSAS DISTRICT CONVENTION SCHEDULE

June 7–9, 2018 | Capitol Plaza Inn, Topeka | Maner Conference Center



### THURSDAY, JUNE 7

*Exhibits open 10:00 a.m.–10:30 p.m.*

8:00 a.m.	Registration Opens
9:00 a.m.	Floor Committees report to assigned rooms
9:30 a.m.	Floor Committee Open Hearings until 11:00 a.m.
11:00 a.m.	Floor Committees – Executive Session as necessary
1:30 p.m.	<b>Convention Opening</b> ( <i>Sunflower Ballroom</i> )
1:35 p.m.	Convention Devotion – Rev. Dave Schemm, Fourth Vice-President (Region 1)
1:50 p.m.	Introductions and Orientation – Rev. Peter Lange
2:00 p.m.	Call to Order
	Introduction to Voting Process – Elections Committee
	Adoption of Convention Standing Rules
2:30 p.m.	District President's Report
2:45 p.m.	Elections Committee (Election of President)
2:50 p.m.	Greetings – Lutheran Church Extension Fund, Rev. Bart Day
2:55 p.m.	Message – LCMS Foundation (video)
3:00 p.m.	<b>BREAK</b> ( <i>snacks and beverages available</i> )
3:15 p.m.	Essay 1: "Life Together for Congregations" – Rev. Dr. Alfonso O. Espinosa
4:00 p.m.	Convention Video: "Kansas District Mission Grants"
4:10 p.m.	Resolutions – Witness Floor Committee
4:55 p.m.	Announcements and Prayer
5:00 p.m.	Dinner on your own
5:00–5:10 p.m.	Floor committee chairs caucus with District President ( <i>Bison Room</i> )
5:00–5:10 p.m.	Advisory pastors caucus with District Secretary ( <i>Pioneer Room</i> )
7:00 p.m.	Convention Worship ( <i>Sunflower Ballroom</i> )
	Host Congregation: Immanuel Lutheran Church, Norton, KS
	Sermon – Rev. Dr. Matthew C. Harrison
9:00 p.m.	President's Reception with Thanksgiving for Debbie Crites' Service to the District ( <i>Shawnee Room</i> )

### FRIDAY, JUNE 8

*Exhibits open 7:15 a.m.–6:00 p.m.*

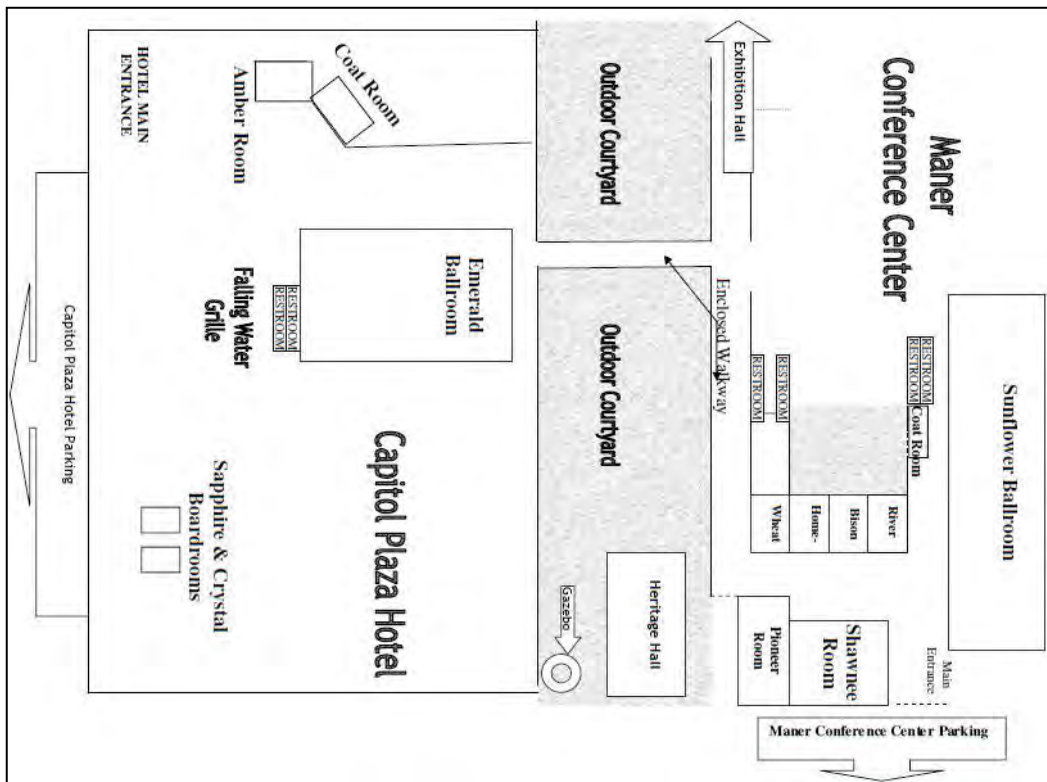
7:15 a.m.	Deluxe Continental Breakfast ( <i>Sunflower Foyer</i> )
8:30 a.m.	Convention Devotion – Rev. Justin Panzer, Second Vice-President (Region 2)
8:45 a.m.	Greetings – Lutheran Laymen's League/Lutheran Hour Ministries, Tim Voelker
8:50 a.m.	Greetings – Lutheran Women's Missionary League, Brenda Piester
8:55 a.m.	Convention Video: "Koinonia"
9:00 a.m.	Resolutions – Life Together Floor Committee
10:00 a.m.	<b>BREAK</b> ( <i>beverages available</i> )
10:15 a.m.	Elections Committee (Elections of Vice-Presidents; Commissioned and Regional Lay Members of the Board of Directors)
11:00 a.m.	Synod President's Report – Rev. Dr. Matthew C. Harrison
Noon	Announcements and Prayer
12:05 p.m.	<b>LUNCH</b> (Delegates Luncheon Buffet in the <i>Emerald Ballroom</i> )
	Circuit caucuses for CV elections as necessary (to be announced)
1:00 p.m.	Q & A with Synod President Rev. Dr. Matthew C. Harrison
1:30 p.m.	Essay 2: "Life Together for Districts" – Rev. Dr. Alfonso O. Espinosa

- 2:15 p.m. Greetings – Concordia Theological Seminary, Fort Wayne, Rev. Dr. Lawrence Rast, and Concordia Seminary, St. Louis, Rev. Dr. Rick Marrs
- 2:25 p.m. Message – Mission Central (video)
- 2:30 p.m. Ratification of Circuit Visitors
- 2:35 p.m. Resolutions – Mercy Floor Committee
- 3:00 p.m. **BREAK** (snacks and beverages available) Visit Exhibits (*Shawnee Room*)
- 3:30 p.m. Commemoration of the Faithful Departed – Rev. Scott Snow, First Vice-President (Region 3)
- 3:50 p.m. Resolutions – Mercy Floor Committee
- Resolutions – Convention Resolutions Committee
- Elections Committee (Election of Nominations Committee Members and At-Large Board of Directors Positions)
- Unfinished Business from Witness and Life Together
- 5:50 p.m. Announcements and Prayer
- 6:00 p.m. Dinner on your own
- 6:00–6:10 p.m. Floor committee chairs caucus with District President (*Bison Room*)

**SATURDAY, JUNE 7**

*Exhibits open 7:15 a.m.–10:30 p.m.*

- 7:15 a.m. Deluxe Continental Breakfast (*Sunflower Foyer*)
- 7:30 a.m. CV/VP Breakfast Meeting (Election of CV Chair; *Pioneer Room*)
- 8:30 a.m. Convention Devotion – Rev. Rick Rostek, Third Vice-President (Region 4)
- 8:45 a.m. Convention Video: “West Africa”
- 8:50 a.m. Essay 3: “Life Together for the World” – Rev. Dr. Alfonso O. Espinosa
- 9:35 a.m. Resolution: Concordia University Nebraska
- 9:45 a.m. Unfinished Business (Omnibus Resolutions)
- 10:15 a.m. **BREAK** (beverages available)
- 10:30 a.m. Unfinished Business
- 11:30 a.m. District President’s Closing Remarks
- 11:40 a.m. Installation: Board of Directors and Circuit Visitors
- 11:55 a.m. Convention Conclusion / Adjournment



# HOW TO TURN ON YOUR KEYPAD:

Press the power button on the lower right hand corner of the device.

The screen will illuminate and that is how you'll know your device is on.



# HOW TO MAKE A SINGLE SELECTION:

To make ONE selection, simply press the number that corresponds with your choice followed by the **SEND** key.

You can change your vote at any time before the polling period closes. Simply make your new choice followed by the **SEND** key



# HOW TO MAKE MULTIPLE SELECTIONS:

Press the number that corresponds with your first choice and press the **SYM** key. Press the number of your next choice and press the **SYM** key. Once all of your selections are in your display, press **SEND**.

To change your vote, press 0 **SEND** to clear out all of your votes. Then, re-enter your new choices and press **SEND**.





# 73<sup>rd</sup> Convention of the LCMS Kansas District June 7 - 9, 2018

## Voting Delegates by Circuit

Updated 5/15/2018; updates highlighted in yellow

Circuit#	Congregation	City	Pastoral Delegate	Lay Delegate
101	Trinity	Atchison	Rev. Robert Ziegler	Adam Goodpasture
102	St. John	Easton	<i>[not eligible]</i>	Kent Ervin
103	St. Paul	Fairview	Rev. Michael Dunaway	Carol Walter
104	Zion	Hiawatha	"	"
109	First	Sabetha	"	"
111	Immanuel	Fairview	"	"
105	Trinity	Holton	<i>[excused]</i>	Roger Hower
106	Immanuel	Netawaka	Rev. Michael Van Velzer	
107	St. Matthew	Nortonville	Rev. Richard Lally	Eric Niemann
108	Zion	Powhattan	<i>[not eligible]</i>	
110	Christ	Wathena	Rev. Cody Norton	Roland Benitz
201	Risen Savior	Basehor	Rev. Robert Weinkauff	Steven Mariano
203	Bethel	Kansas City	<i>[not eligible]</i>	Kathy Jaynes
204	Faith	Kansas City	<i>[excused]</i>	<i>[excused]</i>
205	Grace	Kansas City	<i>[not eligible]</i>	
206	Immanuel	Kansas City	<i>[not eligible]</i>	<i>[excused]</i>
207	Our Saviour	Kansas City	Rev. Tom Van Duzer	Marty Galutia
208	St. Luke	Kansas City	<i>[excused]</i>	Jack Wagner
209	St. Paul	Leavenworth	Rev. Ed Mease	Stephen Fruechtenicht
210	Trinity	Leavenworth	Rev. Damian Snyder	Laura Gray
211	Trinity Family of Faith	Basehor	Rev. Jason Boetcher	Wes Griffith
301	King of Kings	Gardner	Rev. Daniel Wehmeier	Richard Hughey
302	Christ	Overland Park	Rev. Jeff Meyers	Bill Hibbard
303	Lord of Life	Leawood	Rev. Burt Garwood	Kevin McElyea
304	Trinity	Mission/Shawnee	Rev. Mark Schulz	Dan Owsley
305	Redeemer	Olathe	Rev. Perry Sukstorf	Gary Ernst
306	Bethany	Overland Park	Rev. Kevin Wyssmann	Bart Miller
307	First	Paola	Rev. Mark Croucher	Richard Sinclair
308	Trinity	Paola	Rev. Kevin Vogts	Paul Brack
309	Hope	Shawnee	Rev. Michael Penikis	Terry Gansebom
310	Beautiful Savior	Olathe	Rev. Joel Schultz	Doug Mahnken
311	Augsburg	Shawnee	Rev. Jay Watson	Craig Senzig
312	Christ Our Savior	Louisburg	Rev. James A. Keltner	Beth Ramsey
401	St. John	Westphalia	Rev. Timmothy Heath	Darrel Becker
403	Trinity	Burlington	Rev. Don Haselhuhn	<b>Robert Scott</b>
404	Faith	Emporia	Rev. David Schemm	Kenneth Theel
405	Messiah	Emporia	Rev. Norbert Tegtmeier	Dustin Lantow
406	Trinity	Garnett	<i>[not eligible]</i>	Marty Alley
407	Faith	Ottawa	Rev. Charles Adams	Melvin Bauck
408	Zion	Vassar	Rev. Joshua Woelmer	Jim Bauck
502	Trinity	Caney	<i>[not eligible]</i>	
503	Zion	Chanute	Rev. Daniel Ramsey	Ross Henrickson
504	St. Paul	Coffeyville	Rev. Anthony Fields	Ronald Neidigh



<b>Circuit#</b>	<b>Congregation</b>	<b>City</b>	<b>Pastoral Delegate</b>	<b>Lay Delegate</b>
505	Good Shepherd	Erie	Rev. Jay Hobson	Bruce Weber
508	Immanuel	Hepler	"	"
506	Trinity	Fort Scott	Rev. Michael Apfel	Art Murrin
507	Trinity	Girard	Rev. Mark Wenzelburger	Jesse Niederklein
509	St. Peter	Humboldt	Rev. Timothy Roth	Leon Storck
510	Zion	Independence	Rev. Roger Mackie	Keith Confer
511	Grace	Iola	Rev. Bruce Kristalyn	<b>Susan Owens</b>
512	St. Paul	Oswego	Rev. Jonathan Scheck	Cris Leonard
513	Trinity	Parsons	"	"
515	Zion	Pittsburg	Rev. Theodore Cook	Larry Dunekack
601	Immanuel	Lawrence	Rev. Randall Weinkauf	
602	Redeemer	Lawrence	Rev. Robert Leiste	Kevin Frederickson
603	Calvary	Topeka	Rev. Benjamin Ockree	Michael Reb
604	Christ	Topeka	Rev. Daniel Ross	Brian Childs
605	Faith	Topeka	Rev. Jacob Wampfler	Sharon Lowe
607	St. John's	Topeka	Rev. Dr. Jon Steffen Bruss	Clayton Kinnett
609	Prince of Peace	Topeka	Rev. Neil Buono	Greg Hoglund
701	St. Peter	Barnes	<i>[not eligible]</i>	Melvin Pralle
702	Bethlehem	Bremen	Rev. Aaron Fenker	<b>Richard Schotte</b>
703	Immanuel	Bremen	"	"
704	St. Paul	Clay Center	Rev. Paul Tessaro	David Parry
705	Bethlehem	Greenleaf	Rev. Matthew Durance	Dale Hiesterman
706	Trinity	Hanover	Rev. Rodney Fritz	David Kruse
708	Immanuel	Linn	Rev. Rick Rikli	Gene Helms
709	Zion	Linn	Rev. David Gruoner	Stanton Uffman
710	Mt. Calvary	Marysville	Rev. Philip Miller	Bill McClellan
711	St. John	Palmer	Rev. Jacob Sherry	Dan Thalmann
712	Trinity	Linn	<i>[not eligible]</i>	Donald Dodd
801	St. John	Alma	Rev. Robert Grimm	Ervan Stuewe
802	St. Paul	Alta Vista	Rev. Christian Schultz	<b>Misty Schultz</b>
803	St. Paul	Duluth	Rev. Rick Twenhafel	Jamie Ringel
804	Immanuel	Junction City	<i>[not eligible]</i>	Curtis Heidel
805	St. Paul	Junction City	Rev. David Meier	Jeremy Clark
806	St. Luke	Manhattan	Rev. Michael Schmidt	Brian Carter
807	Trinity	McFarland	Rev. Christopher Vossler	Rick Schley
808	Mt. Calvary	Wamego	Rev. James Price	Trevor Jensen
809	St. Luke	Wheaton	Rev. Terry De Giovanni	Milton Falk
810	Christ	Manhattan	Rev. King Crawford	<b>Jeff Nyp</b>
908	Zion	Latimer	"	"
901	Faith	Abilene	Rev. Justin Panzer	Cliff Ascher
902	Calvary	Council Grove	Rev. Adam Reichart	Steve Tiffany
904	Immanuel	Herington	Rev. Walter Gilkey	Jamie Schlesener
906	St. John	Herington	"	"
905	Our Redeemer	Herington	Rev. Mark Lovett	Jeremy Obermeyer
907	Zion	Hillsboro	Rev. John Werner	<b>Larry Miller</b>
910	Our Savior	Marion	"	
909	St. John	Lincolnton	Rev. Alan Stahlecker	Marvin Meisinger
911	Trinity	Ramona	Rev. Clark Davis	<b>Ed Meisinger</b>
913	St. John	Tampa	"	
912	Grace	Strong City	<i>[not eligible]</i>	
914	Zion	Newton	Rev. Aaron Filipek	Mike Carpenter
1001	Peace	Andover	<b><i>[not eligible]</i></b>	Gordon Bowser
1002	Christ	Augusta	Rev. John Einem	Dennis Roberts
1003	Grace	El Dorado	<i>[not eligible]</i>	Ed Gard
1005	Ascension	Wichita	Rev. Dr. Michael Bingenheimer	Beth Ann Ortstadt
1006	Holy Cross	Wichita	Rev. Scott Snow	Randy Allenbach
1008	St. Andrew's	Wichita	<i>[not eligible]</i>	Neal Hall
1009	Risen Savior	Wichita	Rev. Tom Harmon	Richard Wilson
1010	Ascension	Pratt	Rev. Daniel Chrismer	Ron Piester
1101	Zion	Argonia	<i>[not eligible]</i>	
1102	Redeemer	Arkansas City	<i>[not eligible]</i>	Tabitha Brown
1103	St. Paul	Cheney	Rev. Joseph Seifert	Lin Dehning
1104	Faith	Derby	Rev. Thomas Johnson	Thomas Bevington

<b>Circuit#</b>	<b>Congregation</b>	<b>City</b>	<b>Pastoral Delegate</b>	<b>Lay delegate</b>
1105	Calvary	Wellington	Rev. William Wingfield	Vickie Wingfield
1106	Bethany	Wichita	<i>[not eligible]</i>	
1107	Grace	Wichita	Rev. Geoffrey Boyle	Kyle Nelson
1109	Trinity	Wichita	"	"
1108	Immanuel	Wichita	Rev. Ron Gloe	Victor Schimming
1110	Trinity	Winfield	Rev. Rick Hathaway	Timothy Smith
1111	Trinity	Medicine Lodge	Rev. Dennis Fangmeyer	Fred Mattal
1112	St. John	Nashville	"	"
1113	St. Paul	Preston	Rev. Michael Schotte	Warren Briggeman
1201	Immanuel	Canton	Rev. Brent Horne	Travis Sebitts
1202	St. Paul	Haven	Rev. Russell Bonine	Jackie Wagner
1204	Our Redeemer	Hutchinson	Rev. Henry Blickhahn	Timothy Givan
1205	Grace	Lyons	<i>[not eligible]</i>	
1206	Grace	McPherson	Rev. Dale Dumperth	Richard Lawrenz
1207	St. John	Moundridge	Rev. Ron Rather	Stanley Schrag
1208	Christ the King	Salina	Rev. Calvin Reinke	Bob Campbell
1209	Trinity	Salina	Rev. Mark Boxman	CJ Cross
1210	St. John	Ellinwood	Rev. Thomas Thierfelder	Marvin Pipes
1301	Zion	Downs	Rev. Jason Toombs	Samantha Toombs
1302	Immanuel	Ellsworth	Rev. Luke Brown	Bill Evans
1303	St. Paul	Ellsworth	Rev. James Judson	Josh Hulse
1306	Trinity	Hunter	Rev. Matthew Schneider	Kelly Schneider
1307	St. John	Lincoln	Rev. Benjamin Siebert	Victor Suelter
1308	St. Paul	Lincoln	<i>[not eligible]</i>	
1311	Bethlehem	Sylvan Grove	Rev. Christopher Craig	Tyler Gier
1312	Zion	Claffin	Rev. Daniel Harders	Tiffany Harders
1315	St. Peter	Holyrood	"	"
1313	Our Saviour	Great Bend	Rev. Nicholas Martinez	Russell Linderer
1316	Grace	Larned	"	"
1314	Concordia	Hoisington	Rev. Gary Wolf	
1501	Redeemer	Atwood	Rev. Tim McCall	Mark Wolters
1502	Trinity	Colby	Rev. Robert Alexander	David Kruse
1503	Immanuel	Hoxie	Rev. Michael Brockman	Alex Gaede
1507	Immanuel	Oakley	"	"
1504	First St. John	Kensington	Rev. Dave Hutson	Steve Wangerin
1506	Immanuel	Norton	Rev. Rick Rostek	Ben Brakenhoff
1508	St. John	Oberlin	Rev. Bradley Rick	Melvin Waterman
1509	First	Phillipsburg	Rev. Joel Hiesterman	Michela Hiesterman
1510	Grace	Hill City	<i>[not eligible]</i>	
1511	Messiah	Hays	Rev. Rocco Mallardi	
1512	Peace	Natoma	Rev. Michael Schimdt	Phil Hilgers
1513	First	Plainville	"	"
1603	Immanuel	Lakin	Rev. Patrick Gumz	Bruce Ansel
1615	Grace	Ulysses	"	"
1605	Holy Cross	Dodge City	Rev. Randall Jahnke	Dean Cole
1606	Christ	Elkhart	Rev. Ervin Daugherty	Richard Harlow
1607	Trinity	Garden City	Rev. Michael Hageman	<b>Jerry Bitter</b>
1609	St. Paul	Jetmore	<i>[not eligible]</i>	
1610	Grace	Liberal	Rev. Andrew Wehling	Kyle Hammel
1611	St. John	Meade	Rev. Rocky Mease	Lester Tacha
1612	Zion	Offerle	Rev. Stanley Palmer	Debra Lancaster
1617	Our Redeemer	Kinsley	"	"
1613	Holy Cross	Scott City	Rev. Warren Prochnow	<b>Skip Numrich</b>
1618	Peace	Greensburg	<i>[not eligible]</i>	

**President**

Rev. Peter Lange

**Region 1 Vice-President**

Rev. Jon Bruss  
Rev. Robert Leiste  
Rev. Mark Schulz

**Region 2 Vice-President**

Rev. Justin Panzer

**Region 3 Vice-President**

Rev. Geoffrey Boyle  
Rev. Scott Snow

**Region 4 Vice-President**

Rev. Rick Rostek

**Secretary**

Rev. David Meier  
Rev. Robert Weinkauff

**Region 1 Lay Member, Board of Directors**

David Bruns  
Marvin Schulteis

**Region 2 Lay Member, Board of Directors**

David Meisinger  
Richard Schotte  
Dan Thalman

**Region 3 Lay Member, Board of Directors**

Chris Anderson  
Curt Engelbrecht

**Region 4 Lay Member, Board of Directors**

Mark Wolters

**Lay Member At Large, Board of Directors**

Michael Bachelor  
Phillip Friedrichs  
Bruce Schultz  
Stephen Weller

**Commissioned Ministers, Board of Directors**

Rick Hanebutt  
Sue Kleber  
Jeremy Pera

**District Nominating Committee Clergy (3)**

Rev. Jacob Sherry Reg. 2  
Rev. Alan Stahlecker Reg. 2  
Rev. Stan Palmer Reg. 4  
Rev. Joshua Woelmer Reg. 1

**District Nominating Committee****Commissioned Minister**

Kelly Dressler  
Sue Kleber  
Jeremy Pera

**Lay Members (one per region)****Region 1**

Keith Gloe  
Marvin Schulteis

**Region 2**

CJ Cross  
Richard Schotte  
Stephen Weller

**Region 3**

Brent Ostgren

**Region 4**

Dave Bergmeier

**Synod Nominating Committee**

Curtis Engelbrecht  
Victor Martin Schimming  
Marvin Schulteis

Name: Brent Ostgren  
Address: 2002 W 27<sup>th</sup> St. S  
Wichita, KS 67217  
Home Phone: 316-303-2668  
Age: 45

Home Congregation: Immanuel Lutheran  
Address: 909 S. Market St., Wichita, KS 67211  
Years in KS District: 20+  
Occupation: I. T. Architect  
email: [b.ost@outlook.com](mailto:b.ost@outlook.com)

*Education:* Associates

*Service in Congregations:* Ascension Lutheran: Stephen Minister. Immanuel Lutheran: H.S. Sunday School / Usher

*Service to Circuit, District and Synod:* N/A

*List Civic Service, special gifts and related experience:* History / Theology buff, particularly what differentiates confessional Lutherans from other “Lutherans”, reformed bodies, RCs, plus all of the non denom offshoots, as well as the world religions. My father was an LCMS pastor in both Neb. And KS Districts.

*State why you feel you are particularly qualified for this position (50 words or less):* See above. I feel I have a firm grasp on current culture / worship issues relating to the LCMS in general, as well as her key symbols, articles, and confessions (of course the Solas) which we can safely and comfortably rely upon, confess, trust in, and turn to in any and all decisions as well as controversies / schisms.

*Please state your greatest joy or disappointment in the direction the District is moving in ministry (50 words or less):* In all honesty I don’t really know a lot about the KS districts directions as well as I do the LCMS as a whole. I do know that we have much better district leadership than there has been in the not so distant past. I believe this holds true for the current LCMS leadership as well – a vast improvement from the past. I’m happy to see confessional, traditional, liturgical, orthodox Lutheranism becoming something more sought after / valued than in times past – as well as the young faithful pastors coming out of seminary who are inclined in this direction.

*Please state what direction the District should move in the future in response to the Great Commission of the Lord (50 words or less):* The great commission stands strong against and yet exists peacefully (on her part) inside of all cultures of the world as long as the church does not attempt to *become* the world (often in a misguided attempt to save the world or to remain free from persecution). I see as undeniable the link between doctrine and practice; where practice is bad – so goes doctrine and vice-versa. I believe more people are hungry for substance. Many are rejecting Christianity all together because so much of what passes for Christianity has become vapid, cliché, watered-down, feel-good-ism, or “better living through Christianity” social clubs. As long as we hold to our traditional confessions and sound practice, proclaiming the Gospel in word and sacrament, avoiding and correcting error (in all directions) then we stand on firm and good ground.

---

Name: Joshua Woelmer  
Address: 23147 Topeka St.  
Vassar, KS 66543  
Mobile Phone: 785-893-3960  
Age: 29

---

Home Congregation: Zion Lutheran  
Address: 23167 Topeka St, Vassar, KS 66543  
Years in KS District: 2  
email: [joshua.woelmer@gmail.com](mailto:joshua.woelmer@gmail.com)

*Education:* B.A. in Pre-Seminary Studies and Theological Languages, Concordia University Wisconsin (2010); Lutherische Theologische Hochschule, Oberursel, Germany—student exchange program (2012–2013); M.Div., Concordia Theological Seminary, Fort Wayne (2015)

*Service in Congregations:* Pastor, Zion Lutheran Church in Vassar, KS

*Service to Circuit, District and Synod:*

*List Civic Service, special gifts and related experience:*

*State why you feel you are particularly qualified for this position (50 words or less):* I am a lifelong LCMS member. Having only been a pastor for two years, however, I do not feel particularly qualified for this position, though I am open to learning more about our District and serving as needed.

*Please state your greatest joy or disappointment in the direction the District is moving in ministry (50 words or less):* I am encouraged by the visitation of the District staff in meeting with the various circuits and congregations. Having been the recipient of the “Education Loan Repayment” program, which assisted me in paying off my federal loans, I am very grateful to the District and its congregations for their support for new pastors who almost always bring debt into their calls. I do not feel that I have been in the District long enough to comment on specific disappointments, but there is always more that we can do to proclaim the truth in purity and share that truth with the world that so desperately needs it.

*Please state what direction the District should move in the future in response to the Great Commission of the Lord (50 words or less):* The Great Commission is to make disciples in two ways: baptizing and teaching. The church depends on these two means for its existence, and so the Kansas District should continue to prioritize Word and Sacrament ministry as it reaches out into every community.

## RESOLUTIONS

### Committee #1 – Witness

- 18-01-01 To Encourage Kansas District Congregations to Support Mission Work Through the Eugene Schmidt Memorial Mission Fund (*Overture 18-01-07*)
- 18-01-02 To Encourage Kansas District Congregations to Use Synod Outreach Materials (*Overtures 18-01-04, 18-01-05*)
- 18-01-03 To Support Lutheran Mission and Mercy Work in Guinea and West Africa (*Overtures 18-01-01, 18-01-02, 18-01-03, 18-01-04*)
- 18-01-04 To Prioritize New Models and Resources for Small, Struggling and/or Isolated Congregations (*Overture 18-01-09*)
- 18-01-05 To Encourage Congregations to Work Together to Plant Churches (*Overture 18-01-06*)
- 18-01-06 To Encourage Congregations to Develop Long-Term Funding Strategies (*Overture 18-01-08*)

### Committee #2 - Mercy

- 18-02-01 To Affirm the Sanctity of Life (*Overture 18-02-01*)
- 18-02-02 To Support the Well-Being of Professional Church Workers and Their Families (*Overture 18-02-02*)
- 18-02-03 To Encourage Greater Use of the District Retreat Center in Herington by Congregations, Schools and Workers (*Overture 18-02-03*)
- 18-02-04 To Encourage Congregations to Increase Support for Church Worker Scholarship Fund and Educational Loan Repayment (*Overture 18-02-05*)
- 18-02-05 To Encourage Pastors and Congregations to Provide Christ-Centered, Compassionate Care to Those with Mental Illnesses and Disorders (*Overture 18-02-06*)

### Committee #3 – Life Together

- 18-03-01 To Strengthen Church Worker Marriages and Households (*Overture 18-03-05*)
- 18-03-02 To Encourage Congregations to Welcome Visits from Their Visitor (*Overture 18-03-02*)
- 18-03-03 The Placement of Seminary Candidates (*Overtures 18-03-11a and b*)
- 18-03-04 To Support Catechesis in the Home and Through the Family (*Overture 18-03-04*)
- 18-03-05 To Recommend and Encourage the Use of Concordia Publishing House (CPH) Curriculum in Kansas District Preschools and Early Learning Centers (*Overture 18-03-03*)
- 18-03-06 To Encourage Congregations to Use Synod, District and LCEF Stewardship Resources (*Overtures 18-03-06, 18-03-07*)
- 18-03-07 To Encourage Congregations to Use Kansas District Salary Recommendations in Their Compensation Planning (*Overture 18-03-08*)
- 18-03-08 Encourage Congregational Participation in the Church's Plan with Concordia Plan Services (*Overture 18-03-09*)
- 18-03-09 To Foster Active Participation in the Koinonia Project Through the LCMS Kansas District Among Pastors Laity and Congregations (*Overtures 18-03-01a and b*)

### Committee #4 - Convention Resolution

- 18-04-01 To Approve Standing Rules for the 2018 Convention of the LCMS Kansas District (*Overture 18-04-01*)
- 18-04-02 Kansas District Bylaws Revisions (*Overture 18-04-02*)
- 18-04-03 To Celebrate and Give Thanks to God for the 125<sup>th</sup> Anniversary of Concordia University, Seward, Nebraska (*Overture 18-04-07*)
- 18-04-04 To Require Recipients of Kansas District Scholarships to Complete Financial Education Prior to Receiving Funds (*Overture 18-04-11*)
- 18-04-05 To Encourage Congregational Training of Leaders for Ministry with Children, Youth and Adults (*Overture 18-04-04*)
- 18-04-06 To Emphasize Cheerful and Generous Giving in Daily Vocations (*Overtures 18-04-05, 18-04-06*)
- 18-04-07 To Encourage Colloquy or Other Educational Tracks for Non-Rostered Teachers to be Inculcated into Lutheran Theology (*Overture 18-04-03*)
- 18-04-08 To Encourage Support for the Proposed Startup of Concordia Academy: A Lutheran Liberal Arts Education in Wichita, Kansas (*Overture 18-04-10*)
- 18-04-09 To Study and Recommend Strategies in the Advancement of Congregation-based Older Adult Ministries in the Kansas District LCMS (*Overtures 18-04-08, 18-04-09*)

**Resolution 18-01-01**  
*(Overture 18-01-07)*

**To Encourage Kansas District Congregations to Support Mission Work Through the Eugene Schmidt Memorial Mission Fund**

1           **WHEREAS**, the Kansas District received a gift in May 2017 from the estate of Rev. Dr. Eugene E.  
2 Schmidt, former Executive Secretary for Missions and Stewardship and President of the LCMS Kansas  
3 District; and

4  
5           **WHEREAS**, the terms of the trust indicate that the gift is “to be used for charitable purposes in its  
6 [the Kansas District’s] area of greatest need, not to support the general budget”; and

7  
8           **WHEREAS**, mission work has been and continues to be one of the District’s highest priorities,  
9 and

10  
11           **WHEREAS**, this priority is consistent with the work of Rev. Schmidt, who had a heart for  
12 missions; and

13  
14           **WHEREAS**, Kansas is a critically important mission field, particularly in the face of demographic  
15 and cultural changes affecting many of our congregations and workers; and

16  
17           **WHEREAS**, the Kansas Board of Directors recently established “The Eugene Schmidt Memorial  
18 Mission Fund” for supporting mission outreach in the Kansas District, with priority given to the work of  
19 church planting, new outreach initiatives, and revitalization through the Kansas District; and

20  
21           **WHEREAS**, the Kansas Board of Directors, in conjunction with establishing this fund, launched a  
22 new annual Reformation Offering to generate additional support for the fund; therefore be it

23  
24           **RESOLVED**, to give thanks for the generous gift from the Rev. Eugene Schmidt Trust, which has  
25 enabled the District to increase support for mission outreach; and be it further

26  
27           **RESOLVED**, that Kansas District congregations support mission work in Kansas through the  
28 Eugene Schmidt Memorial Mission Fund; and be it finally

29  
30           **RESOLVED**, that congregations be encouraged to participate in the annual Reformation Offering.

**Resolution 18-01-02**  
(Overtures 18-01-04, 18-01-05)

**To Encourage Kansas District Congregations to Use Synod Outreach Materials**

1           **WHEREAS**, “Repentance and forgiveness of sins should be proclaimed in His name to all  
2 nations” by witnesses for Christ (Luke 24:47-48); and  
3

4           **WHEREAS**, “All nations” includes Kansas, where 20% of the population claims no religious  
5 affiliation (Pew Religious Landscape Study, 2014); and  
6

7           **WHEREAS**, LCMS Kansas District congregations have experienced a pattern of decline, with  
8 71% experiencing a decrease in baptized membership from 2006 to 2016.  
9

10          **WHEREAS**, the key to the vitality of any church is the faithful proclamation of God’s Word and  
11 administration of His Sacraments; and believers in Christ are called to reach out with the Gospel  
12 message (1 Peter 2:9); and  
13

14          **WHEREAS**, the Synod has recognized these challenges and in response developed *Every One*  
15 *His Witness*, an evangelism program rooted in the Lutheran understanding of vocation, and *re:Vitality*, a  
16 church revitalization program, and commended the use of these resources by all LCMS congregations in  
17 Synod Convention Resolutions (16-01-01 and 16-01-03); and  
18

19          **WHEREAS**, the Kansas District has earmarked funds to assist congregations interested in  
20 employing *Every One His Witness*, now available as a kit from CPH and to support congregations  
21 interested in using *re:Vitality* materials; therefore be it  
22

23          **RESOLVED**, that the convention encourage Kansas District congregations to use *Every One His*  
24 *Witness* and *re:Vitality* resources as they work to reach the unchurched and those who have drifted away;  
25 and be it further  
26

27          **RESOLVED**, that the Kansas District leadership promote *Every One His Witness* and *re:Vitality*  
28 and develop ways for congregations to network and share insights about these programs; and be it finally  
29

30          **RESOLVED**, that the Kansas District continue to provide funding assistance to LCMS Kansas  
31 congregations, schools, and organizations interested in using *Every One His Witness* and *re:Vitality*.



**Resolution 18-01-03**  
*(Overtures 18-01-01, 18-01-02, 18-01-03, 18-02-04)*

**To Support Lutheran Mission and Mercy Work in Guinea and West Africa**

1           **WHEREAS**, Our Lord gives the command to “go therefore and make disciples of all nations”  
2 (Matthew 28:19-20); and  
3

4           **WHEREAS**, the Scriptures encourage collaboration and coordination in the Church for the sake  
5 of the Gospel (Philippians 1:5); and  
6

7           **WHEREAS**, the LCMS Kansas District has been involved since 1997 in international mission  
8 work in Guinea, where God has blessed outreach efforts in diverse ways; and  
9

10          **WHEREAS**, the District recently expanded this work to French-speaking West Africa, which the  
11 LCMS Office of International Mission (OIM) has identified as an emerging and exciting mission field; and  
12

13          **WHEREAS**, we have many brothers and sisters in Christ working in Guinea and West Africa,  
14 including missionaries, theological educators, medical personnel, and indigenous workers; and  
15

16          **WHEREAS**, the Kansas District Board of Directors approved a Memorandum of Agreement with  
17 the LCMS OIM in 2018 and with Mission Central (an arm of LCMS Mission Advancement) in 2017, with  
18 the aim of enhancing our efforts in West Africa through collaboration, coordination, and increased  
19 visibility; and  
20

21          **WHEREAS**, LCMS Mission Development Counselor Rev. Dr. Brent Smith has been deployed to  
22 the Kansas District to raise awareness of and support for mission projects in West Africa and other  
23 mission projects of interest to the congregations of the LCMS Kansas District; and  
24

25          **WHEREAS**, LCMS work in West Africa includes support for the l’Eglise evangelique lutherienne  
26 de Guinee (CLET) in Dapaong, Togo, which provides seminary education to students in French-speaking  
27 West Africa, including Guinea; and  
28

29          **WHEREAS**, Medical Mercy Teams (MMTs) provide one important avenue for mercy work,  
30 through which medical and non-medical personnel can provide much-needed health care while sharing  
31 the Christ-centered message: “We’re here to serve our neighbor”; therefore be it  
32

33          **RESOLVED**, to thank God for the collaboration between the Kansas District, OIM, and LCMS  
34 Mission Advancement; and Mission Central  
35

36          **RESOLVED**, that the Kansas District support the workers and students at the Lutheran Center for  
37 Theological Studies (CLET) in Togo, indigenous pastors and church workers, and LCMS missionaries  
38 through prayers, encouragement, and financial gifts; and  
39

40          **RESOLVED**, to thank God for Mercy Medical Teams and ask His blessing on MMT workers and  
41 those whom they serve, and that MMTs may be an effective means of caring for both body and soul; and  
42 be it finally  
43

44          **RESOLVED**, that the Convention join in prayer for God’s continued blessing on mission work in  
45 French-speaking West Africa, including Guinea and Togo.

**Resolution 18-01-04**  
*(Overture 18-01-09)*

**To Prioritize New Models and Resources for Small, Struggling and/or Isolated Congregations**

1           **WHEREAS**, the LCMS has experienced a steady decline in baptisms, confirmations,  
2 communicant membership, church attendance, and offerings since 1972, with the Kansas District (like all  
3 other LCMS districts) declining in membership over the past decade; and  
4

5           **WHEREAS**, the Kansas District currently includes 160 congregations, 35% of which have an  
6 average weekly attendance of 50 or fewer; and  
7

8           **WHEREAS**, population projections for Kansas include continued losses in rural areas, an  
9 increase in the aging population, and slower growth, overall, than the nation as a whole; and  
10

11           **WHEREAS**, an increasing number of people, including Kansans, are not identifying with any  
12 religion (“nones”), a change attributed to increasing secularization and changing demographic patterns;  
13 and  
14

15           **WHEREAS**, rising health insurance costs are putting considerable strain on congregational  
16 budgets; and  
17

18           **WHEREAS**, attempts have been made to repeal the housing allowance exemption for clergy,  
19 which, if successful, would create additional hardships for small and struggling congregations seeking to  
20 call and support a pastor; and  
21

22           **WHEREAS**, the number of expected seminary graduates in the years ahead will not match the  
23 demand created by retiring pastors, which will require rethinking the standard “1 pastor, 1 parish” ministry  
24 model; therefore be it  
25

26           **RESOLVED**, that we pray for the well-being of our workers and parishioners in congregations  
27 particularly hard hit by these challenges; and be it further  
28

29           **RESOLVED**, that the District give special attention in the next triennium to ministry and funding  
30 models aimed at assisting small, struggling, and/or isolated congregations; and be it further  
31

32           **RESOLVED**, that circuits, pastors, and lay people be encouraged to discuss options and  
33 resources for their congregations with the Assistant to the President for Missions and Stewardship; and  
34 be it finally  
35

36           **RESOLVED**, that we recognize God’s hand in everything, trusting that where the Word is  
37 preached faithfully, it will accomplish God’s purpose (Is. 55:11, “My Word . . . shall not return to me  
38 empty, but it shall accomplish that which I purpose”).

**Resolution 18-01-05**  
*(Overture 18-01-06)*

**To Encourage Congregations to Work Together to Plant Churches**

1           **WHEREAS**, providing Word and Sacrament ministry throughout the state is a priority in the  
2 Kansas District; and  
3

4           **WHEREAS**, the field for that ministry is changing, demographically and culturally, with the  
5 population in Kansas shifting from rural to urban areas and becoming more diverse; and  
6

7           **WHEREAS**, Kansas is a significant mission field, with a growing number of residents among the  
8 unchurched, dechurched, and disengaged; and  
9

10          **WHEREAS**, the Kansas District is the product of church planting activity, with churches and  
11 schools springing up to serve particular populations and locales; and  
12

13          **WHEREAS**, 1 Cor. 3:6 points us to the importance of planting and watering while reminding us  
14 that God provides growth; and  
15

16          **WHEREAS**, church planting, as articulated in the Synod's *Mission Field: USA* resource (Schave,  
17 2016) is "who we are as a church body, and it is what we have been called to do, as faithful stewards of  
18 God's Word and Sacraments, to reach the lost"; and  
19

20          **WHEREAS**, the Synod affirmed its commitment to church planting at its most recent convention  
21 (Res. 1-02, 2016); and  
22

23          **WHEREAS**, new models for church planting, including network-supported church plants, are  
24 emerging; therefore be it  
25

26          **RESOLVED**, That the convention affirm church planting as a mission priority of the Kansas  
27 District; and be it further  
28

29          **RESOLVED**, that the District identify and share resources for church planting with congregations,  
30 including new partnership models for church plants; and be it further  
31

32          **RESOLVED**, that the District and its congregations make use of Synod resources, including but  
33 not limited to *Mission Field: USA*, to support church planting efforts in Kansas; and be it finally  
34

35          **RESOLVED**, that the Kansas District Board of Mission make church planting a top priority in the  
36 awarding of mission grants.

**Resolution 18-01-06**  
*(Overture 18-01-08)*

**To Encourage Congregations to Develop Long-Term Funding Strategies**

1           **WHEREAS**, the Lutheran Church—Missouri Synod, like all historic American denominations, has  
2 experienced a persistent decline in membership, with significant decreases in child baptisms and adult  
3 converts; and

4  
5           **WHEREAS**, declines in membership can put a strain on congregational resources; and

6  
7           **WHEREAS**, changing demographic and cultural conditions require heartfelt prayer, along with  
8 acknowledgement of the decisive role of the Holy Spirit in the life of the Church; and

9  
10          **WHEREAS**, congregations and their members are also called upon to use their God-given  
11 resources for the good of the Church, which, in these challenging times, requires creative thinking about  
12 ways to promote the Church’s long-term well-being and financial viability; and

13  
14          **WHEREAS**, strategies have been and continue to be developed in the interests of maintaining  
15 faithful Word and Sacrament ministry for future generations; and

16  
17          **WHEREAS**, congregations and their members, while shrinking in number, continue to support the  
18 work of the Church through Sunday offerings as well as designated gifts and bequests; and

19  
20          **WHEREAS**, the next three decades will see a significant the biggest wealth transfer in history,  
21 with trillions of dollars expected to pass from one generation to the next; therefore be it

22  
23          **RESOLVED**, that congregations develop long-term funding strategies in the interests of future  
24 generations of believers; and be it further

25  
26          **RESOLVED**, *that such* strategies include consideration of estate planning (for all adult members),  
27 LCMS Foundation and LCMS Advancement resources, and congregational partnerships; and be it finally

28  
29          **RESOLVED**, that the Board of Directors be encouraged to explore the option of employing a  
30 planned giving counselor for the Kansas District.

**Resolution 18-02-01**  
*(Overture 18-02-01)*

**To Affirm the Sanctity of Life**

1           **WHEREAS**, God has “created man in His own image” (Gen. 1:27); and  
2

3           **WHEREAS**, humans receive value and worth because God has made them and not from the  
4 quality of their life, socioeconomic status, race, or gender (Gen 9:6, James 2:1-10); and  
5

6           **WHEREAS**, because of man’s fall into sin, suffering, disease, famine, poverty, and death entered  
7 into the world (Gen. 3); and  
8

9           **WHEREAS**, death is to be regarded not as part of the natural course of life but rather as a curse  
10 and judgment due to sin, for as God says, “My Spirit shall not abide in man forever, for he is flesh: his  
11 days shall be 120 years” (Gen. 6:3, Ps. 90:10); and  
12

13           **WHEREAS**, despite our sin the Lord is merciful and gracious (Ps. 103:6-8), sustaining and caring  
14 for the people of His creation (Ex. 22:26-27 and Matt. 5:42-45), watching over them and holding them in  
15 His hands throughout their earthly life (Ps. 31:14-15 and Ps. 145:15-16); and  
16

17           **WHEREAS**, God so loved the world that He sent His Son into our flesh to redeem all by His  
18 death and resurrection (Mark 10:45 and 1 Pet. 1:18-19); and  
19

20           **WHEREAS**, by Christ Jesus’ vicarious atonement, death has been conquered for those who  
21 believe and are baptized in the name of the Father, Son, and Holy Spirit (Matt. 28:19, Mark 16:16,  
22 Romans 6:4-6); and  
23

24           **WHEREAS**, the body of the believer is not his or her own, having been “bought with a price” (1  
25 Cor. 6:19-20); and  
26

27           **WHEREAS**, God calls us to speak up for those who cannot speak for themselves (Prov. 31:8-9);  
28 and  
29

30           **WHEREAS**, God calls us to serve our neighbor for their good (Matt. 25:42-43, 1 John 4:19-21,  
31 Luke 10:33-35); and  
32

33           **WHEREAS**, any practice or behavior intended to harm, shorten, or end the life of someone God  
34 has created, including racism, prejudice (Acts 17:26, James 2:1, 1 John 3:15, Rev. 5:9), abortion,  
35 euthanasia and physician-assisted suicide is contrary to God’s Will; therefore be it  
36

37           **RESOLVED**, to thank God for the precious gift of life and all that He does to sustain it; and be it  
38 further  
39

40           **RESOLVED**, that we proclaim the Lord’s forgiveness of our Gracious God to all who are  
41 repentant and in need of our Lord’s tender love; and be it further  
42

43           **RESOLVED**, that we strive to carry out the responsibility that the Lord has given to all, as seen in  
44 the Table of Duties, to love and pray for all (Romans 13:9 and 1 Timothy 2:1); and be it further  
45

46           **RESOLVED**, that the Office of the President of the LCMS Kansas District work with the Life  
47 Coordinator of the district to raise awareness of life issues and provide support and resources to  
48 congregations to assist us all in speaking the truth in love on life issues; and be it finally  
49

50 **RESOLVED**, that Kansas District congregations be encouraged to celebrate Life Sunday on either the  
51 appointed day by the LCMS Life Ministry or Lutherans for Life, or another Sunday as decided by  
52 individual congregations.

**Resolution 18-02-02**  
*(Overture 18-02-02)*

**To Support the Well-Being of Professional Church Workers and Their Families**

1           **WHEREAS**, the overall health and well-being of our church workers is of prime importance in  
2 fulfilling the work God, through the Holy Spirit, has called them to do; and  
3

4           **WHEREAS**, those who are called to serve the church in various capacities are well advised to  
5 care for themselves so that they can carry out their ministries to the best of their ability; and  
6

7           **WHEREAS**, it is vital that congregations, schools, and other agencies support church workers in  
8 pursuit of their well-being; and  
9

10          **WHEREAS**, the LCMS in Convention in 2016 adopted in Resolution 18-04, "That church workers  
11 be encouraged to develop an intentional self-care plan as part of their continuing education portfolio," and  
12

13          **WHEREAS**, intentional self-care plans may prevent problems before they develop or resolve  
14 them before they become crises; and  
15

16          **WHEREAS**, major challenges to the well-being of church workers, along with effective strategies  
17 to deal with those challenges, are known and documented; therefore be it  
18

19          **RESOLVED**, that the Kansas District in Convention express its support for all efforts of  
20 congregations, schools, and agencies to care and support church workers and their families spiritually,  
21 financially, vocationally, intellectually, relationally, emotionally, and physically; and be it further  
22

23          **RESOLVED**, that our congregations, schools, and agencies, be encouraged to utilize the Board  
24 of Caring Ministry and the Worker Care Team in the support of well-being of church workers and their  
25 families; and be it finally  
26

27          **RESOLVED**, that the church workers of the Kansas District be encouraged to develop an  
28 intentional self-care plan, so that they can continue to serve to the best of their ability with the gifts and  
29 strength that God supplies.

**Resolution 18-02-03**  
*(Overture 18-02-03)*

**To Encourage Greater Use of the District Retreat Center in Herington by Congregations,  
Schools and Workers**

1           **WHEREAS**, God has graciously blessed the LCMS Kansas District with a Retreat Center in  
2 Herington which is intended to provide “a relaxing and peaceful atmosphere where professional church  
3 workers can rest and reconnect with God and their family”; and  
4

5           **WHEREAS**, maintaining the Retreat Center involves a sustained commitment of financial and  
6 human resources; and  
7

8           **WHEREAS**, the Retreat Center has been underutilized in recent years, prompting the Board of  
9 Directors to reevaluate Retreat Center operations and establish a Retreat Center Committee; and  
10

11           **WHEREAS**, the District, following recommendations from the Retreat Center Committee, made  
12 several changes to the Retreat Center in the fall of 2017 in an effort to increase occupancy, including new  
13 local management, property improvements, and increased attention to marketing, including a dedicated  
14 reservation email address ([retreathouseherington@gmail.com](mailto:retreathouseherington@gmail.com) ), website ( [https://kslcms.org/caring-](https://kslcms.org/caring-ministry/retreat-center/)  
15 [ministry/retreat-center/](https://kslcms.org/caring-ministry/retreat-center/) ), and Facebook page (<https://www.facebook.com/KSLCMSRetreatCenter/> ); and  
16

17           **WHEREAS**, the Board of Directors will continue to evaluate Retreat Center operations to ensure  
18 that District resources are well-utilized; therefore be it  
19

20           **RESOLVED**, that congregations, schools, and workers of the Kansas District be encouraged to  
21 make greater use of the Retreat Center in Herington.



**Resolution 18-02-04**  
*(Overture 18-02-05)*

**To Encourage Congregations to Increase Support for Church Worker Scholarship Fund  
and Educational Loan Repayment**

1           **WHEREAS**, the congregations and schools of the LCMS depend on a well-educated workforce to  
2 carry out its mission of preaching and teaching; and  
3

4           **WHEREAS**, the training of professional church workers is costly and as a result many church  
5 workers graduate with debt; and  
6

7           **WHEREAS**, the Kansas District, to reduce this burden, has for the past 29 years provided  
8 scholarships to Kansans pursuing full-time church work through the Concordia system and our two  
9 seminaries; and  
10

11           **WHEREAS**, since 1998, the Kansas District has provided Educational Loan Repayment Grants to  
12 church workers currently serving in the district; and  
13

14           **WHEREAS**, the total indebtedness of all 2017 applicants for Educational Loan Repayment  
15 Grants was in excess of \$1.7 million; and  
16

17           **WHEREAS**, the Kansas District has encouraged congregations to support the Educational Loan  
18 Repayment Fund through offerings taken at installations and ordinations of church workers as well as the  
19 Ash Wednesday offering; and  
20

21           **WHEREAS**, the Kansas District has encouraged workers to take advantage of the Rural  
22 Opportunity Zone (ROZ) program in Kansas, and the MinistryFOCUS grants, which provide educational  
23 loan repayment assistance to qualified workers; therefore, be it  
24

25           **RESOLVED**, that the congregations of the Kansas District prayerfully consider supporting the  
26 Kansas District Scholarship and Educational Loan Repayment funds by participating in the Ash  
27 Wednesday offering, by making the funds the beneficiary of other special offerings and be it further  
28

29           **RESOLVED**, that congregations be encouraged to consider adding a line item to their annual  
30 budget for support of the Scholarship and Educational Loan Repayment funds; and be it finally,  
31

32           **RESOLVED**, that congregations consider other ways to help their workers reduce their debt  
33 burden.

**Resolution 18-02-05**  
*(Overture 18-02-06)*

**To Encourage Pastors and Congregations to Provide Christ-Centered, Compassionate Care to Those with Mental Illnesses and Disorders**

1           **WHEREAS**, Our Lord commands us to love our neighbor as ourselves (Mark 12:31); and  
2

3           **WHEREAS**, Paul, the Apostle, reminds us: “If one part [of the Body of Christ] suffers, every part  
4 with it; if one part is honored, every part rejoices with it” (I Corinthians 12:26); and  
5

6           **WHEREAS**, the Psalmist declared: “Oh, taste and see that the LORD is good. Blessed is the man  
7 who takes refuge in Him! For those who fear Him have no lack” (Psalm 34:8,9b); and  
8

9           **WHEREAS**, Jesus, in fulfilling the Scripture quoted Isaiah saying: “The Spirit of the Lord is upon  
10 me, because he has anointed me to proclaim good news to the poor. He sent me to proclaim liberty to the  
11 captives and recovering the sight of the blind, to set at liberty those who are oppressed, to proclaim the  
12 year of the Lord’s favor” (Luke 4:14-21); and  
13

14           **WHEREAS**, according to the National Alliance on Mental Illness (NAMI), about 1 in 5 adults, and  
15 10% of children aged 5-16, suffer from a mental illness or disorder; and  
16

17           **WHEREAS**, mental illnesses and disorders can have negative effects on individuals and families  
18 including behavioral malfunctions, addictions, marital problems leading to divorce, loss of  
19 job, incarceration, and suicide; and  
20

21           **WHEREAS**, mental illnesses and disorders carry a stigma that makes sufferers reluctant to seek  
22 professional help; and  
23

24           **WHEREAS**, mental illnesses and disorders present challenges for pastors and congregations  
25 because of the stigma associated with mental illness; and  
26

27           **WHEREAS**, many pastors and congregations are ill-equipped to provide ministry and  
28 compassionate care to those suffering from a mental illness or disorder; therefore, be it  
29

30           **RESOLVED**, that pastors and churches be encouraged to provide Christ-centered,  
31 compassionate care to those with a mental illness or disorder; and, be it finally  
32

33           **RESOLVED**, that pastors be encouraged to seek additional training to care for those with mental  
34 illnesses and disorders.

**Resolution 18-03-01**  
*(Overture 18-03-05)*

**To Strengthen Church Worker Marriages and Households**

1           **WHEREAS**, Christ's gifts to His Church include workers with various roles – "apostles, prophets,  
2 pastors and teachers, to prepare God's people for works of service, to build up the body of Christ..."  
3 (Ephesians 4:11-12); and,

4  
5           **WHEREAS**, Scripture also lifts up the importance of the well-being of church worker households  
6 (1 Timothy 3); and,

7  
8           **WHEREAS**, Scripture in Ephesians 5:22-32 compares the mystery of the relationship of marriage  
9 to the mystery of the relationship of Christ and the church; and,

10  
11           **WHEREAS**, the 2016 LCMS Church Worker Family Needs Assessment (CW-FNA) and over 650  
12 interviews with worker wives at Doxology events indicate that Church worker households and marriages  
13 are often subjected to stress unique to their vocations which can erode marital quality and family life; and,

14  
15           **WHEREAS**, various Synod entities such as: the LCMS Council of Presidents, Concordia Plan  
16 Services, Concordia Center for the Family at Concordia University-Ann Arbor, and the LCMS Kansas  
17 District Strategic Ministry Plan, have noted the importance of strengthening worker marriages and  
18 households for the sake of healthier congregational ministry; and,

19  
20           **WHEREAS**, the CW-FNA revealed that although at least 1/3 of Kansas District church workers  
21 expressed a desire and need to attend workshops, retreats, couple Bible studies, workers are often  
22 reluctant to request either time and/or funds to attend events that would contribute to strengthening their  
23 marriages; therefore, be it

24  
25           **RESOLVED**, that the Kansas District in Convention encourage every congregation of the District  
26 to provide at least one week-end per year, or the equivalent thereof, for the purpose of strengthening  
27 church worker marriages and households; and, be it further

28  
29           **RESOLVED**, that for this time of renewal, congregations encourage their workers to choose from  
30 a variety of options such as marriage enrichment event, couples' retreat, District sponsored marriage  
31 events or others, and provide the financial support necessary for participation therein; and, be it further

32  
33           **RESOLVED**, that congregations encourage their workers to use their annual vacation and days  
34 off for rejuvenation and rest; and, be it finally

35  
36           **RESOLVED**, that every congregation of the Kansas District be encouraged to pray for their  
37 workers and families' well-being, that they may more effectively serve their Lord and His church.

**Resolution 18-03-02**  
*(Overture 18-03-02)*

**To Encourage Congregations to Welcome Visits from Their Visitor**

1           **WHEREAS**, visitation in the Church has its roots already in the Old Testament where the Lord  
2 frequently visited His people (e.g. Gen. 50:24-25; Ruth 1:6; 1 Sam. 2:21); and  
3

4           **WHEREAS**, in the fullness of time our Lord Himself visited and redeemed His people in the  
5 person of His Son, Jesus Christ (Luke 1:67-68); and  
6

7           **WHEREAS**, during His earthly ministry Jesus visited many such as Zacchaeus and the people of  
8 Jerusalem (Luke 19:1-10; Luke 19:44); and  
9

10          **WHEREAS**, the apostle Paul and Barnabus, on their second missionary journey, visited the  
11 congregations that they had established on their first missionary journey (Acts 15:36); and  
12

13          **WHEREAS**, the visitation of congregations was prominent in the history and practice of the  
14 Church from the New Testament up to the time of Martin Luther; and  
15

16          **WHEREAS**, Luther himself advocated, planned, organized, and participated in the visitation of  
17 churches in Saxony beginning in 1528; and  
18

19          **WHEREAS**, after the time of Luther, visitation continued to be an important custom in the  
20 Lutheran Church which was advocated, more recently, by the likes of President C.F.W. Walther, Bishop  
21 Bo Giertz, Werner Elert, and others; and  
22

23          **WHEREAS**, the 2013 Convention of the Lutheran Church—Missouri Synod adopted by an 83%  
24 vote Resolution 7-01A, “To Set Forth Clear Mutual Expectations in Carrying Out the Office of Visitation”  
25 which is summarized in LCMS Bylaw 4.4.4.; and  
26

27          **WHEREAS**, LCMS Bylaw 4.4.4 describes visitation in the following way:  
28 The district president shall, in accordance with the Constitution of the Synod, in his ministry of  
29 ecclesiastical supervision visit the congregations of the district.  
30 (a) He shall arrange in advance for an official visit to each congregation of his district at least once every  
31 three years and otherwise as he deems it necessary. He may call upon the circuit visitors and vice-  
32 presidents to assist him with the triennial visitation of congregations.  
33 (b) In his official visits he shall seek to bring about to the greatest possible degree the achievement of the  
34 Synod's objectives as expressed in Article III of its Constitution.  
35 (c) He shall conduct his official visits in an evangelical manner.  
36 (d) He shall come to the pastor and the congregation as a brotherly advisor, reminding them of the joy of  
37 serving in the mission and ministry of the church.  
38 (e) In his visits he shall include fraternal discussion in regard to worship and communion attendance;  
39 participation by the congregation in missions and the work of the church at large; the congregation's  
40 evangelism and education endeavors; its cultivation of sound stewardship principles; all aspects of  
41 compensation for professional church workers; the need for maintenance of purity of doctrine; the  
42 strengthening of the bond of Christian fellowship; and the provision of resources, opportunities, and  
43 assistance so God's people can grow in their faith, hope, and love; and  
44

45          **WHEREAS**, since the fall of 2014 the leadership of the Kansas District has been striving diligently  
46 to increase congregational visitation as defined in LCMS Bylaw 4.4.4.; and  
47

48           **WHEREAS**, the frequency of visitations by circuit visitors and the district president with  
49 assistance from the district vice presidents has been increasing with several dozen visits completed  
50 during the past triennium and many more currently being planned; and

51  
52           **WHEREAS**, many congregations and individuals have expressed great appreciation for the many  
53 benefits to congregations, church workers, and the district as a whole that result from visitation; therefore  
54 be it

55  
56           **RESOLVED**, that the Kansas District in convention express appreciation for the tremendous  
57 volunteer service of circuit visitors and others who conduct such visitations on behalf of the Office of  
58 District President; and be it further

59  
60           **RESOLVED**, that the congregations of the Kansas District encourage their circuit visitors in this  
61 work, invite them for regular (triennial) visits, and welcome them as partners in the Gospel when they do  
62 visit so that our life together may be mutually benefitted.

**Resolution 18-03-03**  
*(Overture 18-03-11a and b)*

**The Placement of Seminary Candidates**

1           **WHEREAS**, the number of calling congregations now exceeds the number of available seminary  
2 candidates; and

3  
4           **WHEREAS**, due to retirements and demographics, there is no immediate change to these  
5 numbers for the foreseeable future; and

6  
7           **WHEREAS**, the Word and sacraments are already being delivered by a called and ordained  
8 servant of the Word in those congregations calling an assistant/associate pastor; and

9  
10          **WHEREAS**, the Word and sacraments are not being delivered to the same degree in a strictly  
11 vacant congregation (AC V & AC XIV); and

12  
13          **WHEREAS**, the filling of vacancies (Romans 10) puts undue hardships on the families and  
14 congregations of those vacancy pastors filling said vacancies; and

15  
16          **WHEREAS**, serving in a congregation as a sole pastor will better prepare a man for future service  
17 to the Church as opposed to specialized ministry in a larger congregation; and

18  
19          **WHEREAS**, having vacancies in a Circuit causes stress and fear in other congregations, as  
20 Circuits continue to walk together for the mission of Christ; therefore be it

21  
22          **RESOLVED**, that the Kansas District encourage congregations who are considering calling an  
23 additional pastor(s) prayerfully to consider the needs of vacant congregations; and be it finally

24  
25          **RESOLVED**, that the Kansas District President , encourage the Council of Presidents, acting as  
26 the Board of Assignments, to give preference to those congregations calling sole pastors from the  
27 Seminary.

**Resolution 18-03-04**  
*(Overture 18-03-04)*

**To Support Catechesis in the Home and Through the Family**

1           **WHEREAS**, catechesis is the teaching and passing along of the Faith of Christ so that every  
2 believer may be formed and transformed in heart, mind, and life, and in thought, word, and deed  
3 (Romans 12:1-2; Ephesians 4:20-32; Colossians 3:16-17; 1 John 3:16-24); and,  
4

5           **WHEREAS**, God has called upon parents to catechize their children in the Faith (Deuteronomy  
6 4:9; Psalm 34:11; Psalm 78:1-7); and,  
7

8           **WHEREAS**, the church is called upon to assist parents in this responsibility of passing the faith  
9 from one generation to the next (Isaiah 54:13; Joel 2:15-16; Matthew 18:1-6; 19:13-15; Acts 2:37-38);  
10 and,  
11

12           **WHEREAS**, after Holy Scripture itself, the text of Luther's Small Catechism is a primary teaching  
13 tool of the Lutheran Church; and,  
14

15           **WHEREAS**, the text is intended to be used in the home and church, and spread abroad as freely  
16 as possible; and,  
17

18           **WHEREAS**, wherever the teachings of Luther's catechisms are read, studied, printed, sung,  
19 written, posted, repeated and learned, the Holy Spirit produces the fruit of faith and love; and,  
20

21           **WHEREAS**, a new edition of Luther's Small Catechism with Explanation (2017) has been  
22 published by Concordia Publishing House to aid parents and other catechists in addressing new and  
23 current issues faithfully in accordance with Scripture; therefore,  
24

25           **RESOLVED**, that the congregations of the Kansas District train, equip, and encourage families  
26 individuals in the use of home-based catechesis methodologies utilizing God's Word and Luther's Small  
27 Catechism.

**Resolution 18-03-05**  
*(Overture 18-03-03)*

**To Recommend and Encourage the Use of Concordia Publishing House (CPH) Curriculum in  
Kansas District Preschools and Early Learning Centers**

1           **WHEREAS**, the Kansas District of The Lutheran Church-Missouri Synod has 3,873 students  
2 enrolled in 2017-18 in forty five Lutheran early childhood centers and fourteen elementary schools; and,  
3

4           **WHEREAS**, the church exists in a mission field with great opportunities to reach out to the  
5 unchurch students in our schools; and,  
6

7           **WHEREAS**, Lutheran schools are privileged with the opportunity to teach the Word of God in its  
8 truth and purity, acknowledge the Bible as God's infallible Word and the Confessions as the true  
9 exposition of the Word, emphasize Law and Gospel as the key teachings of Scripture, and equip students  
10 to proclaim the Good News to others; and,  
11

12           **WHEREAS**, the LCMS has a publishing arm in Concordia Publishing House (CPH) whose  
13 mission it is to produce doctrinally sound, educationally excellent resources for the church; and,  
14

15           **WHEREAS**, CPH's One in Christ religion curriculum provides a developmentally appropriate,  
16 Christ-centered resource that allows for flexibility in meeting the needs of individual classrooms and  
17 teachers, while focusing on each child's relationship with their Savior in daily Bible story lessons; and,  
18

19           **WHEREAS**, only 66% of Kansas District Preschools and Early Learning Centers are currently  
20 using CPH religion curriculum; therefore,  
21

22           **RESOLVED**, that the Kansas District recommend and encourage the use of Concordia  
23 Publishing House (CPH) Religion Curriculum in Kansas District Preschools and Early Learning Centers.



**Resolution 18-03-06**  
*(Overtures 18-03-06, 18-03-07)*

**To Encourage Congregations to Use Synod, District and LCEF Stewardship Resources**

1           **WHEREAS**, “A person cannot receive even one thing unless it is given him from heaven” (John  
2 3:27); and

3  
4           **WHEREAS**, Scripture repeatedly exhorts believers to give generously of their God-given  
5 resources (2 Cor. 9:6-15); and

6  
7           **WHEREAS**, Scripture provides many vivid examples of generous giving, including the Philippians  
8 (Phil. 4:14-20), the widow and her mites (Luke 21:1-4), and the faithful servant (Matt. 14-30); and

9  
10           **WHEREAS**, such stewardship is especially important now, as churches everywhere, including the  
11 LCMS and every one of its districts, face declining membership and engagement due to population shifts  
12 and cultural attitudes; and

13  
14           **WHEREAS**, despite clear guidance from Scripture, average church member giving has declined  
15 steadily over the past several decades to a rate of 2.16 percent of income in 2014; and

16  
17           **WHEREAS**, giving to Synod reflects this downward trend, with Synod now receiving 9/10 of a  
18 penny for every dollar that is given in offering plate compared to 6.1 cents per dollar given in the offering  
19 plate in 1976, and

20  
21           **WHEREAS**, the most powerful way to counteract this trend is through God’s Word, by providing  
22 “instruction in sound doctrine” (Titus 1:9; 2:1) with respect to stewardship; and

23  
24           **WHEREAS**, LCEF is an entity of the Synod and a valued partner in the stewardship ministry of  
25 the District, committed to supporting the Church by ensuring that funds are available now and in the  
26 future; and

27  
28           **WHEREAS**, LCEF supports the District with an array of services, including loans, funding for  
29 capital improvements, Laborers for Christ architect services, VisionPath, the Church Improvement  
30 Program, demographic analyses, investment options, Outreach Ministry Grants, and Consecrated  
31 Stewards; and

32  
33           **WHEREAS**, the Synod, District, and LCEF together have developed resources to aid  
34 congregations in this task; therefore be it

35  
36           **RESOLVED**, that Kansas District congregations be encouraged to prioritize stewardship  
37 education in the next triennium; and be it further

38  
39           **RESOLVED**, that congregations be encouraged to use LCEF financial services and their  
40 stewardship resources, including Consecrated Stewards; and be it finally

41  
42           **RESOLVED**, that congregations avail themselves of stewardship education resources provided  
43 by the Synod and District.

**Resolution 18-03-07**  
*(Overture 18-03-08)*

**To Encourage Congregations to Use Kansas District Salary Recommendations in Their Compensation Planning**

1           **WHEREAS**, Scripture establishes the importance of compensating church workers, noting that  
2 “the laborer deserves his wages” (Luke 10:7; see also 1 Cor. 9:11; 1 Cor. 9:14; Gal. 6:6); and  
3

4           **WHEREAS**, the Table of Duties in the *Small Catechism* affirms the importance of compensating  
5 workers in “What the Hearers Owe Their Pastors” (1 Cor. 9:14; Gal. 6:6-7; 1 Tim. 5:17-18; 1 Thess. 5:12-  
6 13; Heb. 13:17); and  
7

8           **WHEREAS**, workers are not always compensated adequately, which can affect their well-being  
9 and morale;  
10

11           **WHEREAS**, worker care is a high priority in the Kansas District; and  
12

13           **WHEREAS**, market-based compensation planning tools are available from the District and Synod  
14 to help ensure that church workers are suitably compensated; and  
15

16           **WHEREAS**, the Board of Stewardship, President’s Council, Board of Administration, Salary  
17 Review Committee, and Board of Education all strongly advocate employing these tools in compensation  
18 planning to ensure that our workers are cared for properly; and  
19

20           **WHEREAS**, standardizing decision making from year to year through the use of such tools  
21 reduces guesswork and subjective judgments that may not serve the long-term interests of either workers  
22 or congregations well; therefore be it  
23

24           **RESOLVED**, that congregations ask the Lord’s guidance that His will be done and He may be  
25 glorified as they determine compensation for their workers; and be it further  
26

27           **RESOLVED**, that congregations employ available market-based compensation resources,  
28 including the Kansas District salary recommendations, to establish appropriate compensation for their  
29 church workers; and be it further  
30

31           **RESOLVED**, that feedback from congregations on the use of these tools during official visitations,  
32 pre-call meetings, or annual surveys would be welcomed; and be it finally  
33

34           **RESOLVED**, that the District Business Manager, Executive for Missions and Stewardship, circuit  
35 visitors, or regional vice-presidents of the Kansas District provide support and assistance to  
36 congregations in using these tools to create fair and manageable compensation plans.

**Resolution 18-03-08**  
*(Overture 18-03-09)*

**Encourage Congregational Participation in the Church's Plan with Concordia Plan Services**

1           **WHEREAS**, Concordia Plan Services is the preeminent provider of health, retirement and  
2 disability benefits for church workers throughout the Lutheran Church- Missouri Synod; and  
3

4           **WHEREAS**, significant detrimental consequences may occur to both employer and employee  
5 upon withdrawal from Concordia Plan Services; and  
6

7           **WHEREAS**, Concordia Plan Services has continued to improve and update benefits to better  
8 serve the needs of the employees and employers of The Lutheran Church – Missouri Synod; and  
9

10          **WHEREAS**, Concordia Plan Services offers in its "The Church's Plan" the additional retirement  
11 benefits of a 403(b) Tax Sheltered Annuity; therefore be it  
12

13          **RESOLVED**, that the congregations, schools, associations and entities in the Kansas District of  
14 The Lutheran Church – Missouri Synod be encouraged to participate in the Church's Plan for their  
15 employees.

**Resolution 18-03-09**  
(Overtures 18-03-01a and b)

**To Foster Active Participation in the Koinonia Project Through the LCMS Kansas District Among Pastors, Laity and Congregations**

1           **WHEREAS**, the one, holy, catholic, and apostolic Church unites all believers in Christ in an  
2 invisible fellowship through holy Baptism and justifying faith in Jesus Christ, the world’s Redeemer from  
3 sin, death, and the devil’s power (Ephesians 4); and  
4

5           **WHEREAS**, in spite of this oneness in the holy, catholic, and apostolic Church, the outward  
6 church militant remains divided and is “by schisms rent asunder, by heresies distressed” (LSB 644.4) ;  
7 and  
8

9           **WHEREAS**, even our own Lutheran Church—Missouri Synod has in her history fallen prey to  
10 schism and false teaching; and  
11

12           **WHEREAS**, disunifying debate persists within our Lutheran Church—Missouri Synod over many  
13 matters of doctrine and practice; and  
14

15           **WHEREAS**, disunity in the church is diametrically opposed to the explicit desire of the Lord Jesus  
16 for His believers, John 17:21 “that they may all be one, just as you, Father, are in Me, and I in you;” and  
17

18           **WHEREAS**, our Lutheran Church—Missouri Synod has nevertheless been blessed with the very  
19 basis of God-pleasing unity in doctrine and practice, the verbally-inspired, inerrant Holy Scriptures of the  
20 Old and New Testaments, “the pure, clear fountain of Israel” (FC SD Rule and Norm 3); and the Book of  
21 Concord of 1580, “a true exposition of Holy Scripture and a correct exhibition of the doctrine of the  
22 Evangelical Lutheran Church” (LSB *Agenda*, p. 179), which all members of Synod “make their own” as a  
23 true exposition of the Scriptures; and  
24

25           **WHEREAS**, in addressing matters of doctrine and practice in the Evangelical Lutheran Church  
26 the Holy Scriptures are a “lamp for my feet and a light to my path” (Psalm 119:105) and “the only  
27 standard and rule of doctrine” (FC SD Rule and Norm 9); and  
28

29           **WHEREAS**, as a true exposition and exhibition of the doctrine of the Scriptures the Book of  
30 Concord is and remains “the common, unanimously accepted meaning of our churches” (FC SD Rule and  
31 Norm 11) to be “cheerfully accepted and tolerated as witness of the truth” (FC SD Rule and Norm 12) and  
32 “quoted...as a witness of the truth and as the unanimously received, correct understanding of our  
33 predecessors who have steadfastly held to the pure doctrine” (FC SD Rule and Norm 13); and  
34

35           **WHEREAS**, the unity of the church in doctrine and practice is the only external mark of the inner  
36 unity of the church (AC 7.2 and FC SD 10.31, “According to this teaching concerning adiaphora no church  
37 shall condemn another because of dissimilarity in the ceremonies that some, by reason of Christian  
38 liberty, observe fewer of, and others more of, *if only they be of one mind in doctrine and in all its parts and*  
39 *in the right use of the Sacraments*”); and  
40

41           **WHEREAS**, the Lord calls upon His church to live in love and harmony (1 Corinthians 13) and  
42 connects love with the church’s witness to the world (John 13:35); and  
43

44           **WHEREAS**, the Office of the President of the Lutheran Church—Missouri Synod, to foster greater  
45 cohesiveness within our Synod, has advanced the *Koinonia Project* to gather pastors, laity, and  
46 congregations around the Holy Scriptures and the Lutheran Confessions; and  
47

48           **WHEREAS**, the *Koinonia Project* has been formally, successfully, and gainfully employed by  
49 gatherings of circuit pastors within our District, with one project running for 5 years and another for 2; and  
50

51           **WHEREAS**, whether pastors, laity, and congregations are united or disunited in doctrine and  
52 practice, the *Koinonia Project* remains a useful tool both for preserving existing unity and seeking to  
53 repair disunity; and  
54

55           **WHEREAS**, many pastors, laity, and congregations within our district have not yet adopted or  
56 employed the *Koinonia Project*; therefore be it  
57

58           **RESOLVED**, that the LCMS Kansas District, rejoicing in our unity in Christ through Baptism into  
59 His death and resurrection and faith in the Same, embrace the *Koinonia Project* as an outward  
60 manifestation of our invisible unity; and be it further  
61

62           **RESOLVED**, that the Office of the District President give a high priority to the implementation of  
63 the *Koinonia Project* throughout the LCMS Kansas District among pastors, laity, and congregations with  
64 an end-goal of not only studying Scripture and the Confessions of the Evangelical Lutheran Church, but  
65 to fostering unity in doctrine and practice; and be it further  
66

67           **RESOLVED**, that each circuit be encouraged by the Office of the District President with  
68 implementing the *Koinonia Project* not only among pastors, but also among laity and congregations; and  
69 be it finally  
70

71           **RESOLVED**, that the LCMS Kansas District Board of Education offer consultation and support to  
72 groups within our District who wish to implement the *Koinonia Project*.

**Resolution 18-04-01**  
*(Overture 18-04-01)*

**To Approve Standing Rules for the 2018 Convention of the LCMS Kansas District**

- 1 The Special Standing Rules for the Convention which follow are being presented to the 2018 Convention  
2 for approval. They are included at the front of the workbook for the information and convenience of  
3 delegates in the event they are adopted.
- 4 1. The chair will see that the agenda is followed as closely as possible.  
5 2. Resolutions shall be prioritized by floor committees and normally shall be presented to the convention  
6 in numerical sequence. However, resolutions that impact nominations or elections may be given  
7 earlier consideration at the discretion of the chair, in consultation with the floor committee chairman  
8 and the chairman of the floor committees on nominations and elections.  
9 3. It shall be the discretion of the chairman or presenting member of the floor committee to read the  
10 preface, preamble, rationale, and whereas sections of resolutions from floor committees that are  
11 printed in the Workbook Update. In addition, the chair of the convention is not required to read each  
12 resolution as he states the questions and then as he calls for the vote.  
13 4. The delegates will consider omnibus resolutions as part of regular scheduled business. Omnibus A  
14 refers to overtures referred to a board, commission, or other group of Synod to consider and take  
15 action. Omnibus B refers to overtures that affirm an action previously taken in past conventions.  
16 Omnibus C refers to overtures declined by the floor committee. Omnibus D refers to overtures of  
17 thanks or recognition. **A majority vote is required to remove an overture from an omnibus  
18 resolution and have it referred to the appropriate floor committee for action.**  
19 5. If any resolution is not acted upon by the convention before adjournment, it dies and the subject  
20 matter may be reintroduced for possible consideration by an overture to the next convention.  
21 6. When recognized by the chair, members of the convention will state their name, whether they are a  
22 delegate or an advisory delegate, and the congregation or ministry they represent.  
23 7. Delegates may speak and vote. All nonvoting advisory delegates and representatives may  
24 participate in debate, but may not nominate candidates, make motions, or vote.  
25 8. A delegate who has spoken on an issue may not at the close of their remarks move the previous  
26 question.  
27 9. No delegate or representative may speak in debate any longer than two (2) minutes per speech. No  
28 delegate or representative may speak more than twice on the same motion on the same day and may  
29 not speak a second time until all delegates and representatives desiring to speak the first time have  
30 had the opportunity. The chair shall have discretion to make exceptions to this rule.  
31 10. While any voting delegate may move to close debate (call the question) at any time that it is his or her  
32 turn to speak, a vote on closing debate (two-thirds vote required) on the pending motion shall be put  
33 by the chair after every twenty (20) minutes of debate. The chair may also call for a vote on closing  
34 debate (two-thirds vote required) when in his judgment the assembly has heard sufficient speaking  
35 from both sides of the issue. (The Pro-Con speakers on a question will be observed at the discretion  
36 of the chair.)  
37 11. Personal Privilege will not be abused by using the time to advance the speaker's opinion. It is only to  
38 ask a procedure or parliamentary question. Ordinarily, questions of privilege (or point of personal  
39 privilege) shall be addressed in writing to the chair or his appointee.  
40 12. All substitute motions and amendments must be presented in written form to the District Secretary.  
41 Material should be provided in digital format (and may be sent by e-mail to  
42 [KSDconvention@gmail.com](mailto:KSDconvention@gmail.com)) when possible.  
43 13. If a substitute motion is offered and seconded, the presenter will be offered two minutes to provide  
44 the rationale for presenting it. The convention will then first decide by majority vote without debate  
45 whether or not to consider the substitute. If the decision is in the affirmative and the substitute motion  
46 is subsequently adopted, the original motion fails; if the substitute motion does not receive favorable  
47 action either to consider or to adopt, the original motion is again before the house. (This is the so-  
48 called "Behnken rule" for dealing with substitute motions.)

- 49 14. No motion to reconsider or rescind shall be made or called up during the last day of the convention.
- 50 15. The Convention may alter or add to the nominated slates except for the slate for President. A floor
- 51 nomination must be accompanied by written acceptance of nomination from the nominee and a brief
- 52 biographical description of the nominee. Material should be provided in digital format when possible.
- 53 (These are to (may) be sent to the Nominations Committee at [KSDconvention@gmail.com](mailto:KSDconvention@gmail.com) for review
- 54 of proper credentials.)
- 55 16. During the Convention, the order of elections will be: (1) President, (2) Vice Presidents and (3) All
- 56 other elective positions.
- 57 17. A majority of all votes cast shall be required for election to all elective offices and elective board
- 58 positions. Candidates receiving a majority on the first ballot shall be declared elected.
- 59 18. The election of the President will take place by ballot. If no candidate receives a majority of the votes
- 60 cast, the candidate receiving the fewest votes shall be eliminated on each subsequent ballot until one
- 61 candidate receives a majority of the votes cast.
- 62 19. The election of the Vice Presidents will take place by ballot. If no candidate receives a majority of the
- 63 votes cast, the candidate receiving the fewest votes shall be eliminated on each subsequent ballot
- 64 until one candidate receives a majority of the votes cast.
- 65 20. Upon the election of the regional vice-presidents, a final election will take place ranking the vice-
- 66 presidents by separate ballots with a simple majority determining the first, second, third and fourth
- 67 vice-presidents in line of succession.
- 68 21. Except on the election of the President and the Vice-Presidents, the following regulations will apply:
- 69 Candidates receiving a majority on the first ballot will be declared elected. When a second or
- 70 succeeding ballot is required for a majority, the candidate receiving the fewest votes and all
- 71 candidates receiving less than 15% of the votes cast will be dropped from the ballot, unless fewer
- 72 than two candidates receive 15% or more of the votes cast, in which case the three highest
- 73 candidates will constitute the ballot.
- 74 22. Unless covered by these standing rules of the convention, parliamentary procedure will be governed
- 75 by the most recent edition of *Robert's Rules of Order*.
- 76 23. Use of portable telephones and other electronic communication devices will be permitted in the
- 77 delegate section. **Please respectfully turn all electronic devices to silent mode. Any phone calls**
- 78 **received or made will be outside the convention floor. Not responsible for wifi connections or**
- 79 **power source.**
- 80 24. No distribution of literature will be allowed in the Manor Conference Center without pre-convention
- 81 approval by the office of the District President.

**Resolution 18-04-02**  
*(Overture 18-04-02)*

**Kansas District Bylaws Revisions**

1           **WHEREAS**, the LCMS Commission on Constitutional Matters is required to “examine the articles  
2 of incorporation, bylaws and policy manuals of every agency of the Synod to ascertain whether they are  
3 in harmony with the Constitution, Bylaws, and resolutions of the Synod; and  
4

5           **WHEREAS**, the bylaws as adopted in 2015 Convention of the Kansas District of The Lutheran  
6 Church-Missouri Synod have been reviewed, modified and presented to the Kansas District Board of  
7 Directors for consideration; and  
8

9           **WHEREAS**, changes have been made to the bylaws, (shown with strikeouts and italics) requiring  
10 convention approval; therefore be it  
11

12           **RESOLVED**, that the convention of the Kansas District adopt the Bylaws as modified.



1 **TABLE OF CONTENTS**

2  
3 **Articles of Incorporation**

4 **Mission Statement**

5 **Preamble**

6 **Bylaws**

7 ~~**Organizational Chart**~~

8 ~~**Regional Organization**~~

9  
10 **of The Kansas District of The Lutheran**  
11 **Church—Missouri Synod**

12

13 Articles of Incorporation.....2

14 Mission Statement .....3

15 Preamble to Bylaws .....3

16 Bylaws .....4

17     Article I Name .....4

18     Article II Organization .....4

19     Article III Administration.....4

20     Article IV Nominations and Elections.....8

21     Article V Conventions and Conferences .....9

22     Article VI Property..... 10

23     Article VII Amendments and Changes.....10

24     Article VIII ~~District Handbook~~ and District Operations Manual..... 10

25 ~~Organizational Chart.....11~~

26 ~~Regional Organization.....12~~

27

28

29 **ARTICLES OF INCORPORATION**

30  
31  
32 **Charter of The Kansas District of**  
33 **The Lutheran Church—Missouri Synod**

34  
35 The undersigned, citizens of the State of Kansas, do hereby voluntarily associate ourselves  
36 together for the purpose of forming a private corporation under the laws of the State of Kansas,  
37 and do hereby certify:

38  
39 First  
40 (Amended June 8, 1948)

41  
42 That the name of this corporation shall be The Kansas District of The Lutheran Church—  
43 Missouri Synod.

44  
45 Second

46  
47 That the purposes for which this corporation is formed are to propagate the Evangelical  
48 Lutheran Church of the Unaltered Augsburg Confession, and to aid congregations in securing  
49 and maintaining property for public worship, according to the confessions of the Book of  
50 Concord of the year 1580. *All provisions of the Kansas District Articles of Incorporation and*  
51 *Bylaws are subject to the provisions of the Constitution, the Bylaws, and the resolutions of the*  
52 *Lutheran Church—Missouri Synod in Convention.*

53 Third  
54 (Amended June 18, 1976)

55  
56 That the places where its business is to be transacted are at any and all places in Kansas.

57  
58 Fourth  
59 (Amended January 4, 1989)

60  
61 The term of existence of this Corporation shall be perpetual.  
62 *In the event of dissolution other than by direction from the Synod in convention, the assets of*  
63 *the Kansas District, subject to its liabilities, shall be transferred, consistent with applicable*  
64 *state and federal laws, to The Lutheran Church—Missouri Synod.*

65  
66 Fifth  
67 (Amended June 12, 1974)

68  
69 That the number of Directors of this Corporation shall be not less than three nor more than  
70 twenty.

71  
72 In testimony whereof, we hereunto subscribed our names, this 31st day of January, A.D. 1890.

73  
74 F. Pennekamp                      H. C. Senne                      Aug. Mangeldorf  
75 C. Vetter                              F. Droegemueller              C. Hafner

76  
77  
78  
79  
80  
81  
82  
83  
84  
85  
86  
87  
88  
89  
90  
91  
92  
93  
94  
95  
96  
97  
98  
99  
100  
101  
102  
103  
104  
105  
106  
107  
108  
109  
110  
111  
112  
113  
114  
115  
116  
117  
118  
119  
120  
121  
122  
123  
124

## **MISSION AND VISION STATEMENTS**

*The servant mission of The Kansas District is to equip, empower and encourage each congregation in its mission vision and Christ-care ministry.*

*Our **Mission** is to support and encourage the members of the District in carrying out the mission Christ has given His Church (Mt 28)*

*Our **Vision** is to partner with and connect the workers, congregations and schools of the District with resources to advance God's mission.*

## **PREAMBLE TO THE BYLAWS**

We, the members of The Kansas District of The Lutheran Church—Missouri Synod, as redeemed children of God, acknowledge our part in Christ's mission of proclaiming the freedom and forgiveness of God in Christ to all human beings and of providing aid for them in their spiritual and physical needs. We acknowledge that we have bound ourselves together in a common bond of faith based on the Scriptures and the Lutheran Confessions as the members of District and Synod because we recognize the need for helping each other carry out this mission. We need the ministry of fellow Christians so that, with the help of the Holy Spirit, we may grow in faith and be better prepared to participate in Christ's mission both individually and corporately. In order that we may carry out this mission effectively, we, united in the common bond of faith and love, have established these procedures that shall help to strengthen and guide us. Within the framework of these procedures we pledge ourselves to study the Scriptures diligently, to use the Sacraments faithfully, and to solicit the help of the Holy Spirit boldly.

125  
126  
127  
128

# THE BYLAWS

129  
130  
131  
132

## Article I - Name

133  
134  
135

The name of this corporation is: "The Kansas District of The Lutheran Church—Missouri Synod," hereinafter referred to as "The Kansas District" or "The District".

136  
137

## Article II - Organization

138  
139  
140

1. **Constitution:** The Constitution of The Lutheran Church—Missouri Synod is also the Constitution of The Kansas District. The Bylaws of the Synod are also the primary Bylaws of the Kansas District.

141  
142  
143

2. **Legal Representation:** The President and Secretary of the District shall sign all official documents of the District in the name of the District.

144  
145  
146

3. **Membership:** Membership in The Kansas District shall be governed by the Constitution and the Bylaws of the Synod.

147  
148  
149

4. **Relationship of the District to the Synod:** The relationship of The Kansas District to The Lutheran Church—Missouri Synod shall be governed by the Constitution and Bylaws of the Synod.

150  
151  
152

5. **District Conventions:** District conventions shall be governed by the Constitution and Bylaws of the Synod and also by the specific articles governing convention procedure as may be defined in these Bylaws and the District Operations Manual.

153  
154  
155

6. **District Board of Directors:** The business and financial affairs of The District shall be governed by the Board of Directors. The Board of Directors oversees the implementation of the strategic mission of The District and is responsible to the District convention to equip, enable and encourage congregations to proclaim the Gospel. The Board of Directors is vested with the general management and supervision of the District's business and legal affairs and shall adopt policies and require procedures which assures said management and supervision are effected. Between conventions the Board of Directors shall provide for implementation within the District of decisions of the *Synod national* and District conventions, approve and review progress of work program plans, adopt annual budgets to support work plans, procure and allocate necessary funds for support of *Synod national* and District budgets, review program performance, call or hire District Executive staff as deemed appropriate, provide review of Executive Staff positions, and administer the District endowment funds and other District ~~foundation endowments and~~ funds.

156  
157  
158

159  
160  
161

162  
163  
164

165  
166  
167

7. **District Operations Manual:** In addition to the Constitution and Bylaws of the Synod and the Bylaws of the District, a District Operations Manual shall be established and maintained. This Operations Manual shall specify responsibilities of all officers, boards and committees as well as policy statements and operating procedures governing all District functions.

168  
169  
170

171  
172  
173

8. **Geographical Regions:** The District shall be divided into geographical regions, each comprised of *two (2)* or more circuits, by the action of the District Convention. A vice president and a layperson shall be elected to the Board of Directors from each geographic region and a layperson from each geographic region shall be elected to the District Nominations Committee.

174  
175  
176

## Article III - Administration

177  
178  
179

1. **Elective and appointive officers shall execute their responsibilities in accordance with Synodical By-Laws. These elective and appointive officers shall be:**

180  
181 (a) The District President: Elected from the clergy roster of Synod and who shall hold membership in a  
182 voting congregation. The District President is the *Chief Executive* of the District. He shall represent the Synod  
183 in the District. He is responsible for implementation of the resolutions of the Synod and the District  
184 Conventions. The District President serves the congregations of the District as liaison between the  
185 congregations, District and the Synod and provides leadership and vision for the common work of the  
186 congregations, District, and District staff. He is responsible as top staff administrator, for oversight of staff  
187 carrying out the directives of the Board of Directors. ~~for oversight of all functions of the Board of Directors.~~  
188 He shall serve as a voting member of the District Board of Directors and is not eligible to *be appointed* ~~serve~~  
189 as the presiding officer of the Board meetings. The District President also serves as an ecclesiastical  
190 supervisor to congregations and professional workers, makes official visits and investigations, and maintains  
191 the official roster of workers in the District.

192  
193 (b) Vice Presidents: A District Vice President shall be elected from each region as provided by  
194 Article II, Section 8 of the Bylaws. The Vice-Presidents shall be elected from the clergy roster of the District  
195 *and have residence within* the region from which elected. The Vice Presidents shall assist the President in  
196 administering the overall program of the District, especially in their regions. They shall succeed to the office  
197 of President, in the event the President is unable to serve, in the order designated by the Convention.

198  
199 (c) Secretary: The District Secretary shall be elected from the clergy roster of the District and  
200 ~~who~~ shall hold membership in a voting congregation of the District. The District Secretary is responsible for  
201 conducting the nominations process for the elections of ~~the~~ president and vice-presidents, ~~regional lay members~~  
202 ~~of the Board of Directors~~, facilitating the work of the Nominating Committee, organizing the work of the  
203 Elections Committee, and maintaining the District Operations Manual and related guidelines. The District  
204 Secretary is responsible for recording and preserving the official record of actions of the District Convention  
205 and the Board of Directors

206  
207 (d) Treasurer: The District Treasurer shall be appointed by the Board of Directors and is the  
208 custodian of all money and legal documents of the District. The Treasurer is assisted by the District staff for  
209 accounting and preparation of records. The Treasurer shall be a layperson, a member of a voting congregation  
210 of the District and demonstrate skills in finance and accounting. The appointment shall *run concurrent with*  
211 ~~district convention~~ *be for three (3) years* after which reappointment ~~or release~~ may be granted.

212  
213 (e) Circuit Visitors: A visitor for each circuit of the District ~~may~~ *shall* be nominated and elected  
214 from the clergy roster of the District. *as prescribed by the Bylaws of the Synod.*  
215 The Conference of Circuit Visitors shall assist the District President ~~to equip, empower and encourage~~  
216 ~~congregations in their mission to make disciples~~ *according to the Bylaws of the LCMS* and shall serve as liaison  
217 to bringing the needs of congregations to the attention of the District President.

218  
219 (f) Presiding Officer of Board meetings: The Board of Directors shall appoint a member of the  
220 Board to be the presiding officer of the meetings of the Board in consultation with and with the concurrence  
221 of the District President. The District President will not normally serve as the presiding officer of the Board  
222 meetings. In the absence of the presiding officer, the District president shall assume the role of presiding  
223 officer, pro tem.

## 224 225 **2. Elective Boards and Appointive Boards, Committees and Commissions shall be:**

226  
227 (a) The Board of Directors: The Board of Directors shall consist of seventeen (17) voting  
228 members elected at the District Convention:

- 229 I. Seven (7) ordained ministers:  
230 a. The District President.  
231 b. The Regional Vice Presidents.  
232 c. The District Secretary.  
233 d. The Chairperson of the Conference of Circuit Visitors.

- 234  
235 II. Three (3) Commissioned Ministers.

236 III. Seven (7) Laypersons, at least one (1) elected from each region. *(Regional members shall*  
237 *have residence within their region.)*  
238

239 The advisory members of the Board of Directors shall be the District Treasurer and the District  
240 Executive Staff.  
241

242 The Board of Directors shall meet a minimum of four (4) times each year. Additional meetings may  
243 be called by the District President. Time and place of these meetings shall be determined by the District  
244 President. A majority of members of the Board shall constitute a quorum.  
245

246 To meet the exigencies of District operations, the Board may meet by telephone conference call, or  
247 vote by written, mailed or electronic ballot pursuant to written notification. Actions taken at such meetings or  
248 by written ballot shall have the same effect as those taken at regular meetings of the Board.  
249

249 Electronic Meetings

- 250 • The board may conduct its meetings electronically using audio, video, or internet-based  
251 conferencing technologies.
- 252 • In such cases, the technology must allow for each board member to fully participate  
253 (hear, speak, have or been given access to documents and other materials as appropriate),  
254 including the opportunity to vote.
- 255 • Members must be given a reasonable opportunity to access the electronic meeting. *If a*  
256 *board member does not have access to the technology to be used, arrangements will be*  
257 *made for the member to participate in person by coming to the District Office or other*  
258 *mutually agreed upon location (prior arrangement necessary).*
- 259 • As with any board, regular or special meeting, minutes shall be kept that record a  
260 summary of the major points of discussion and any action(s) taken.
- 261 • Any board member listening or watching shall acknowledge their presence to the  
262 meeting. These names along with the attending board members shall be recorded in the  
263 minutes of the meeting.

264 Quorum

- 265 • A majority of voting members of the Board shall constitute a quorum at any properly  
266 called or scheduled meeting.

267 Actions Using Electronic Ballot

268 In situations where board members are not able to meet as described above, the Board may  
269 take action by use of electronic ballot (i.e., e-mail, internet-based voting, etc.) *provided all*  
270 *voting members of the board cast a vote and the result of the voting is unanimous.*  
271

272 Minutes of previous meetings, including conference calls and the responses to mailed ballots, shall be  
273 provided to the members of the Board at least ten (10) days prior to Board meetings.  
274

275 The agenda for each meeting of the Board shall be prepared by the District President in consultation  
276 with the Executive Council.  
277

278 The District Secretary shall serve as secretary of the Board.  
279

280 (b) Service Boards: The Board of Directors shall organize the following service boards as  
281 described in the District Operations Manual:  
282

283 I. Board of Missions: The Board of Missions is responsible for planning and  
284 implementing evangelism and mission efforts of the District and equipping, encouraging and  
285 empowering congregations in their mission and outreach efforts.

286 II. Board of Education: The Board of Education is to foster and promote Christian  
287 education in the congregations of the District, so that children, youth, and adults may grow  
288 in their faith, knowledge and understanding of God's Word, thereby equipping, encouraging  
289 and empowering them to proclaim the Gospel in their lives.

290  
291  
292  
293  
294  
295  
296  
297  
298  
299  
300  
301  
302  
303  
304  
305  
306  
307  
308  
309  
310  
311  
312  
313  
314  
315  
316  
317  
318  
319  
320  
321  
322  
323  
324  
325  
326  
327  
328  
329  
330  
331  
332  
333  
334  
335  
336  
337  
338  
339  
340  
341  
342  
343  
344  
345  
346

III. Board of Caring Ministry: The Board of Caring Ministry equips, empowers and encourages congregations in caring ministry which responds to the special needs of people. It also offers care and support where needed for professional workers of the church.

IV. Board of Stewardship: The Board of Stewardship encourages the free and joyous activity of the child of God and God's family, the church, in managing all of life and life's resources for God's purposes and fulfilling the responsibilities of Synod Bylaw section 4.6.

V. Board of Administration: The Board of Administration provides administrative and support services to the Board of Directors and congregations of the District including accounting, property management, communications, and related services.

VI. Executive Council: The Executive Council shall include the District President, Presiding officer of the Board meetings, the Regional Vice Presidents, the Chairman of the Circuit Visitors, the Secretary and the Treasurer. The District President shall serve as chairman of the Executive Council. The Executive staff are advisory members of the Executive Council. The Executive Council shall recommend action to the Board on matters which do not fall within the scope of activities of the Boards listed above. The Executive Council is to serve as the coordinating agency of the Board of Directors for meeting ~~schedule~~ preparation, recommendations for appointments and as a forum for sharing program and budget information with service boards.

VII. Emergency meetings: The Executive Council may act for the Board of Directors in times of emergency between meetings and in all matters delegated to it by specific action or by policy of the Board, including response to legal action. The Executive Council may not perform acts specifically required by statute or by legislation or the Constitution, Bylaws, and resolutions of the Synod. All Executive Council actions shall be reported to the Board of Directors. Any member of the Executive Council may request full Board action on any matter. Minutes of the Executive Council shall be sent to the Board within two weeks of the Council action. These meetings may be called by the District President, the Presiding Officer of the Board meetings or three members of the Executive Council.

VIII. Salary Review Committee: The Salary Review Committee is responsible to the Board of Directors for recommending salaries for the staff positions of the District and recommending changes in the base figure used for the annual Guideline for Worker Compensation for use by congregations.

IX. The President's Council shall consist of the District President, Vice Presidents, Secretary and Chairperson of the Circuit Visitors. The District President may consult with them on ecclesiastical matters as appropriate.

(c) The District Nominations Committee.

(d) One member of the Synod's Committee for Convention Nominations when required.

(e) The following Service Boards are appointed by the District President in consultation with the Executive Council and approved by the Board of Directors: Board of Caring Ministry, Board of Stewardship, Board of Education, Board of Missions and the Board of Administration.

~~(f) The Standing Appointive Committees, recommended by the Executive Council and approved by the Board of Directors, shall be such committees as are necessary for carrying out the duties of the Service Boards. Members shall be appointed from voting congregations of the District.~~

~~(g) The Special Appointive Committees and Commissions appointed from the membership of voting congregations by the District President shall be: the Elections Committee, the Congregational Constitution Review Committee, the District Bylaws and Operations Manual Committee, the Commission on Ministerial Health and the Lutheran Church Extension Fund Board of Managers.~~

*f. The Standing Committees and Commissions of the Kansas District shall be: the Elections Committee, the Congregational Constitution and Bylaw Review Committee, the District Bylaws and Operations Manual Committee and others described in the District Operations Manual.*

*Members of these Standing Committees are appointed by the District President and approved by the Board of Directors.*

347 *Members of these Standing Committees must be members in good standing of a voting congregation*  
348 *of the Kansas District.*

349  
350 *g. Special Committees shall be such committees as are from time to time necessary for carrying out*  
351 *the duties of the District Service Boards. Members of these committees are appointed by the District President*  
352 *in consultation with the Executive Council and are approved by the Board of Directors.*

353 *Members of these committees must be members of a voting congregation of the Kansas District.*

354  
355 **3. Term of Office:**

356  
357 (a) The term of office for the ~~elective~~ President, shall be three (3) years. The ~~elective~~ President shall  
358 not serve more than four (4) consecutive terms.

359  
360 (b) The term of office for the ~~elective~~ Vice Presidents, Secretary, Circuit Visitors, and the Board of  
361 Directors shall be three (3) years. None of these ~~elective~~ officers shall serve more than three consecutive terms.

362  
363 (c) The term of office of the District Nominations Committee shall be three (3) years. Members of  
364 the Committee may not succeed themselves.

365  
366 (d) ~~Executive staff officers shall be subject to review and reappointment or release every three (3)~~  
367 ~~years.~~ The term of office of appointive boards, committees and commissions shall be for three (3) years. *run*  
368 *concurrent with district convention. Due to their responsibilities, the District Youth Ministry Team and the*  
369 *Church Worker Conference Planning Committee are exempt from running concurrent with district convention.*

370 (e) Members of District boards and commissions shall be ineligible for reelection or reappointment  
371 to the same board or commission after serving three (3) consecutive terms unless otherwise provided in the  
372 Bylaws. They may become eligible again for election or appointment to the same office, board or commission  
373 after an interval of three (3) or more years. ~~One half (1/2) or more of a~~ *More than one half (1/2) term shall be*  
374 *regarded as a full term.*

375  
376 (f) Any member of a board or commission who is ineligible for reelection or reappointment may be  
377 elected or appointed to another position.

378  
379 (g) Members of the District staff, while eligible for elective office, shall not serve concurrently as  
380 staff and elected officers ~~(cf. Synod Bylaws 1.5.1.1 and 1.5.1.2)~~

381  
382 ~~(h) The term of office of Appointive Officers shall be for three (3) years.~~

383  
384 ~~(i) The term of office of appointive boards, committees and commissions shall be for three (3) years.~~  
385 ~~Members shall be appointed following the District Convention.~~

386  
387 **4. Accountability of Officers, Boards, Committees and Commissions:** All ~~Officers~~, Boards, Committees  
388 and Commissions shall be responsible to the Board of Directors for the discharge of their responsibilities.  
389 Officers in general are responsible to the convention of the district (Const. XI A 1) and, as regards ecclesiastical  
390 supervision, to the President of the Synod. ~~However, ecclesiastical supervision will be in accordance with~~  
391 ~~Synodical Bylaws.~~

392  
393 **5. Holding More than One (1) Elective Office:** A Nominated Candidate, if elected, may  
394 not hold more than one (1) office to which he/she was elected. The individual may  
395 be considered for a second office provided it is by official appointment *as referenced*  
396 *in LCMS Bylaws 1.5.1.1-2.* ~~and does not interfere with responsibilities of the elected~~  
397 ~~office.~~ Doubtful cases shall be decided by the President of Synod.

398  
399 **6. Succession to the Office of District President.** The Vice Presidents shall, in the order in which they have  
400 been designated by the District Convention, succeed to the presidency in the event the President becomes  
401 unable to carry out his duties. Whenever the Board of Directors determines that the President is unable to serve  
402 in the capacity because of prolonged illness or disability, the duties and responsibilities of the office of the



403 President shall be assumed by the First Vice President. The First Vice President shall remain as the acting  
404 President until the Board of Directors determines that the conditions of illness or disability have been removed.  
405

406 **7. Vacancies in Elective or Appointive Office.**  
407

408 (a) In the event of a vacancy in the office of a Vice President, a successor shall be appointed by the  
409 Board of Directors from the region not represented. A Vice President so appointed shall be last in the order of  
410 succession.  
411

412 (b) Vacancies that occur in the office of Circuit Visitor between conventions shall be filled by  
413 appointment by the District President.  
414

415 (c) *Vacancies in standing committees shall be filled by the District President.*  
416

417 (d) Vacancies in the other elective or appointed offices, or any other board, *special* committee or  
418 commission shall be filled by appointment by the Board of Directors. At least one nominee shall be submitted  
419 by the Executive Council. A vacancy in a position of a regionally elected layperson on the Board of Directors  
420 shall be filled with an appointee from that region.  
421

422 **8. Appointment of Board Chairpersons:** The President shall appoint the chairperson of each *service* board.  
423 ~~commission or committee~~ in consultation with the Executive Council and with the approval of the Board of  
424 Directors.  
425

426 **Article IV – Convention Nominations and Elections**  
427

428 **1. Nominations Committee:** There shall be a District Nominations Committee consisting of three (3) ordained  
429 ministers (not more than one [1] from the same region of the District), one (1) commissioned minister, and four  
430 (4) laypersons, (one [1] elected from each region of the District). These shall be elected at a regular District  
431 Convention from the membership of voting congregations. This committee shall propose at least two (2)  
432 candidates for each office to be filled at the next District Convention except the offices of President, Vice  
433 President and Circuit Visitor. ~~and regional members of the Board of Directors.~~  
434

435 **2. Nominations for District President, Vice Presidents, Regional Lay Members of the Board of Directors and**  
436 **Circuit Visitors:**

437 (a) District President – Each congregation shall be entitled to nominate one ordained minister as candidate  
438 for District President. Candidates for the office of District President shall be on the clergy roster of Synod.  
439 Only ~~five~~ *three* individuals receiving ~~five or more~~ nominations, and agreeing to serve if elected, may be listed  
440 on the Convention ballot.

441 (b) Regional Vice Presidents – Each congregation shall be entitled to nominate from their region one  
442 ordained minister from the clergy roster of the District and who shall have residence within the region from  
443 which nominated Candidates on the ballot for Vice President from each region shall ~~be at least two of those~~  
444 ~~who received the largest number of nominations~~ *all those having more than a single nomination* and who  
445 agree to serve if elected. In the event of death, declination, or unavailability of any candidate, the nominee  
446 having the next highest number of votes shall become a candidate. In the event of a tie for the final candidate  
447 position, all names involved in the tie shall be included as candidates.

448 (c) ~~Regional Lay Members of the Board of Directors – Each congregation shall be entitled to nominate~~  
449 ~~two lay members who are presently members of a congregation in the respective region as candidate for regional~~  
450 ~~lay member of the Board of Directors.~~ *All nominees for lay members of the Board of Directors shall hold*  
451 *residency within the respective region from which they are nominated.* Candidates shall be at least the two lay  
452 members in the region who receive the greatest number of nominations and agree to serve if elected. All  
453 candidates not elected shall be on the ballot for the at large lay positions on the Board of Directors.

454 (d) Circuit Visitor – The selection of Circuit Visitor will follow the process detailed in the Synod ~~Bylaw~~  
455 ~~5.2.2-Handbook.~~  
456

457 **2. Elections:**

- 458 1. *The Convention may alter or add to the nominated slates except for the slate for President. A floor*  
 459 *nomination must be accompanied by written acceptance of nomination from the nominee and a brief*  
 460 *biographical description of the nominee. Material should be provided in digital format when*  
 461 *possible.*  
 462 2. *During the Convention, the order of elections will be: (1) President, (2) Vice Presidents and (3) All*  
 463 *other elective positions.*  
 464 3. *A majority of all votes cast shall be required for election to all elective offices and elective board*  
 465 *positions. Candidates receiving a majority on the first ballot shall be declared elected.*  
 466 4. *The election of the President will take place by ballot. If no candidate receives a majority of the*  
 467 *votes cast, the candidate receiving the fewest votes shall be eliminated on each subsequent ballot*  
 468 *until one candidate receives a majority of the votes cast.*  
 469 5. *The election of the Vice Presidents will take place by ballot. If no candidate receives a majority of*  
 470 *the votes cast, the candidate receiving the fewest votes shall be eliminated on each subsequent ballot*  
 471 *until one candidate receives a majority of the votes cast.*  
 472 6. *Upon the election of the regional vice-presidents, a final election will take place ranking the vice-*  
 473 *presidents by separate ballots with a simple majority determining the first, second, third and fourth*  
 474 *vice-presidents in line of succession.*  
 475 7. *Except on the election of the President and the Vice-Presidents, the following regulations will apply:*  
 476 *Candidates receiving a majority on the first ballot will be declared elected. When a second or*  
 477 *succeeding ballot is required for a majority, the candidate receiving the fewest votes and all*  
 478 *candidates receiving less than 15% of the votes cast will be dropped from the ballot, unless fewer*  
 479 *than two candidates receive 15% or more of the votes cast, in which case the three highest*  
 480 *candidates will constitute the ballot.*

481  
 482 ~~2. **Elections Committee:** There shall be an Elections Committee consisting of two (2) ordained ministers,~~  
 483 ~~two (2) laypersons and one (1) commissioned minister to serve at each District Convention recommended by~~  
 484 ~~the Executive Council and appointed from the convention delegates by the District President in consultation~~  
 485 ~~with the Board of Directors who shall conduct and supervise elections at the District Convention in accordance~~  
 486 ~~with the Handbook of the Synod and the Bylaws of the Kansas District. Tellers may be designated by the~~  
 487 ~~Elections Committee.~~

488  
 489 **Article V - Conventions and Conferences**  
 490

491 **1. District Conventions:**  
 492

493 (a) The regular Convention of the District is held in the year immediately preceding the general  
 494 convention of the Synod. Only the Synod has the right to make an exception to this rule. Each of the *parishes/*  
 495 *congregations of the District (a multi-congregation parish being considered as a congregational unit)*~~(a~~  
 496 ~~multiple parish being considered as a congregational unit)~~ shall be represented by one (1) pastor and one (1)  
 497 lay delegate duly elected by the congregation at least one hundred fifty (150) days prior to the Convention.  
 498

499 (b) The vote at all District Conventions shall be restricted to the duly elected and certified voting  
 500 pastors and lay delegates of the congregations. ~~Multiple parish congregations~~ *Multi-congregation parishes*  
 501 shall determine the voting lay delegate who shall represent all congregations of that parish. *If a congregation*  
 502 *or parish has more than one called pastor who is eligible to vote, the congregation shall designate which pastor*  
 503 *will cast a vote on behalf of the congregation.*  
 504

505 (c) The District Convention shall be conducted in accordance with the Synodical Handbook. Matters  
 506 for consideration by the Convention shall be presented by Overture submitted by a member congregation of  
 507 the District, the District Board of Directors, an official District conference of ordained and/or commissioned  
 508 ministers, a committee established by a prior convention, or a forum of a circuit. Resolutions for consideration  
 509 by the Convention shall be brought to the floor of the Convention by appointed Floor Committees.  
 510

511 **2. District Pastors' and Educators' Ordained and Commissioned Minister Conferences:**  
 512

513 (a) Official Conferences:

514 I. District-wide Ordained Ministers' Conferences shall be held at least once each year.  
515 II. District-wide Commissioned Ministers' Conferences shall be held at least once each year.  
516 III. In the odd numbered years the Ordained Ministers' Conference and Commissioned  
517 Ministers' Conference shall be held at the same time and in the same city so that both Conferences shall be  
518 enabled to meet together in joint session at least part of the time. *Exceptions may be made by the District*  
519 *President in consultation with the President's Council.*

520  
521 (b) General Regulations:  
522 I. Travel, meals, housing and other expenses for professional workers attending official  
523 conferences shall be borne by the congregations of the Ordained ministers and Commissioned ministers  
524 involved.  
525 II. All Ordained Ministers' and Commissioned Ministers' Conferences shall be governed  
526 by the regulations stated in the Bylaws of the Synod.  
527 III. All Ordained and Commissioned ministers on the District rosters ~~and certified workers~~  
528 ~~of the Kansas District~~ are expected to attend *the* meeting of their official conference, or present a valid excuse.

529  
530 3. **Visitation Circuit Forums:** The congregations of a visitation circuit, represented by a pastor and one lay  
531 member of each congregation (Synod Bylaw 5.3.2), shall meet in circuit forums at least once triennially to  
532 select Circuit Visitors (Synod Bylaw 5.2.2), to participate in the triennial process of suggesting mission and  
533 ministry emphases to the District Convention (Synod Bylaws 5.3.4, 5.3.1[b], 4.2.1[b]), and to consider  
534 submitting other overtures to the District or ~~national~~ *Synod* Convention ~~of the Synod~~ (Synod Bylaw 3.1.6.2).  
535 In addition, the forum is encouraged to meet at least two times a year to carry out other functions as described  
536 in Synod Bylaw 5.3.1 and to pursue other interests deemed important such as lay leadership development,  
537 teacher training, and participation under existing District policy in future local mission development.

538  
539 4. **Electoral Circuit Meetings:** The congregations of a visitation circuit or two adjacent visitation circuits  
540 (Synod Bylaw 3.1.2 [a]) shall meet once triennially to carry out the responsibility of electing delegates to the  
541 general convention of the Synod and to consider sending overtures to the Synod convention (Synod Bylaw  
542 3.1.6.2).

543  
544 5. **Circuit Convocations:** Circuits of The Kansas District may hold Circuit Convocations in the year following  
545 the Synodical convention. Joint convocations of Circuits may be held among Circuits. The purpose of the  
546 Circuit Convocation is to provide a setting in which congregational members may review and discuss the work  
547 of the Circuit Forum, and may receive information on various phases of the work pursued through Districts and  
548 the Synod. Its emphasis will be on inspiration, education and motivation.

549

## 550 **Article VI – Property**

551 This corporation shall have power to acquire by gift, grants, demise, devise, bequest, purchase, or otherwise,  
552 property of every kind and description, real, personal, or mixed; to hold and use such property and deal with,  
553 or dispose of, any or all such property by sale, exchange, or gift, when necessary or expedient to carry out the  
554 objectives of the corporation; provided that all such property shall be acquired, dealt with, or disposed of in a  
555 manner not in conflict with the laws of the State of Kansas or the laws of any state in which said property is  
556 located.

557

## 558 **Article VII - Amendments and Changes**

559  
560 Changes in these Bylaws and additions thereto may be made provided they are not contrary to the Constitution,  
561 Bylaws, and resolutions of the Synod, have received prior approval of the Synod's Commission on  
562 Constitutional Matters, are presented to the congregations of the District at least thirty (30) days prior to the  
563 time they are presented for vote, are separately considered and acted upon, and are passed by a majority of the  
564 voting delegates at a District convention.

565

566 *The District in convention may vote to amend its bylaws provided the resolution is contingent on approval of*  
567 *the Commission on Constitutional Matters. The amended bylaws become effective immediately, and only upon,*  
568 *approval of the Commission on Constitutional Matters. Should the Commission on Constitutional Matters not*

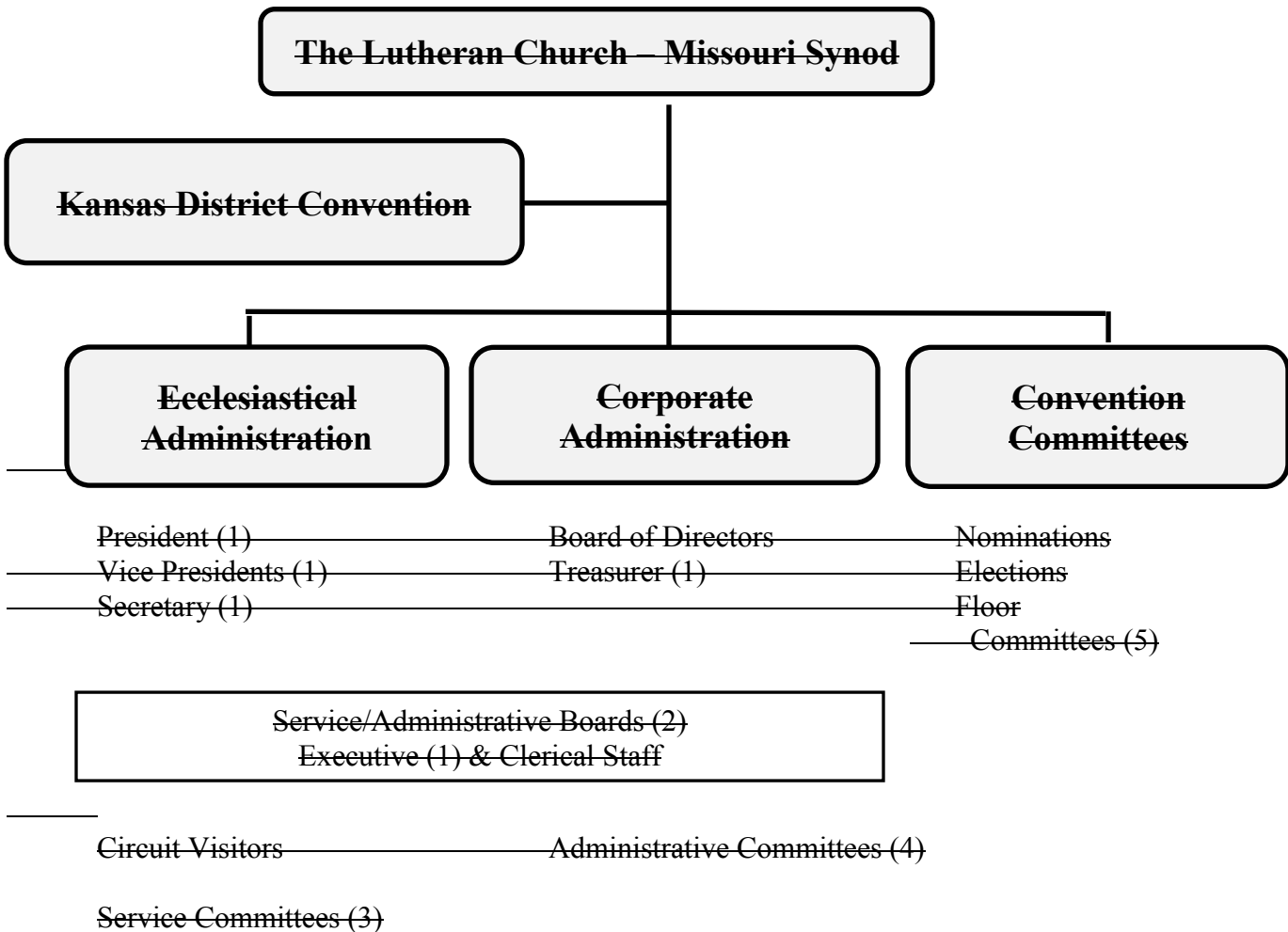
569 *approve the adopted changes, the district Board of Directors may modify amendments to comply with the*  
 570 *Commission on Constitutional Matters requirements upon their two-thirds vote.*

571  
 572 **Article VIII - District Operations Manual**

573  
 574 Changes to the District Operations Manual which do not affect the Bylaws of the District shall be reviewed and  
 575 approved by the Board of Directors. Changes to the District Operations Manual which require changes to the  
 576 Bylaws of the District shall require approval of the Board of Directors and adoption by the District Convention.  
 577

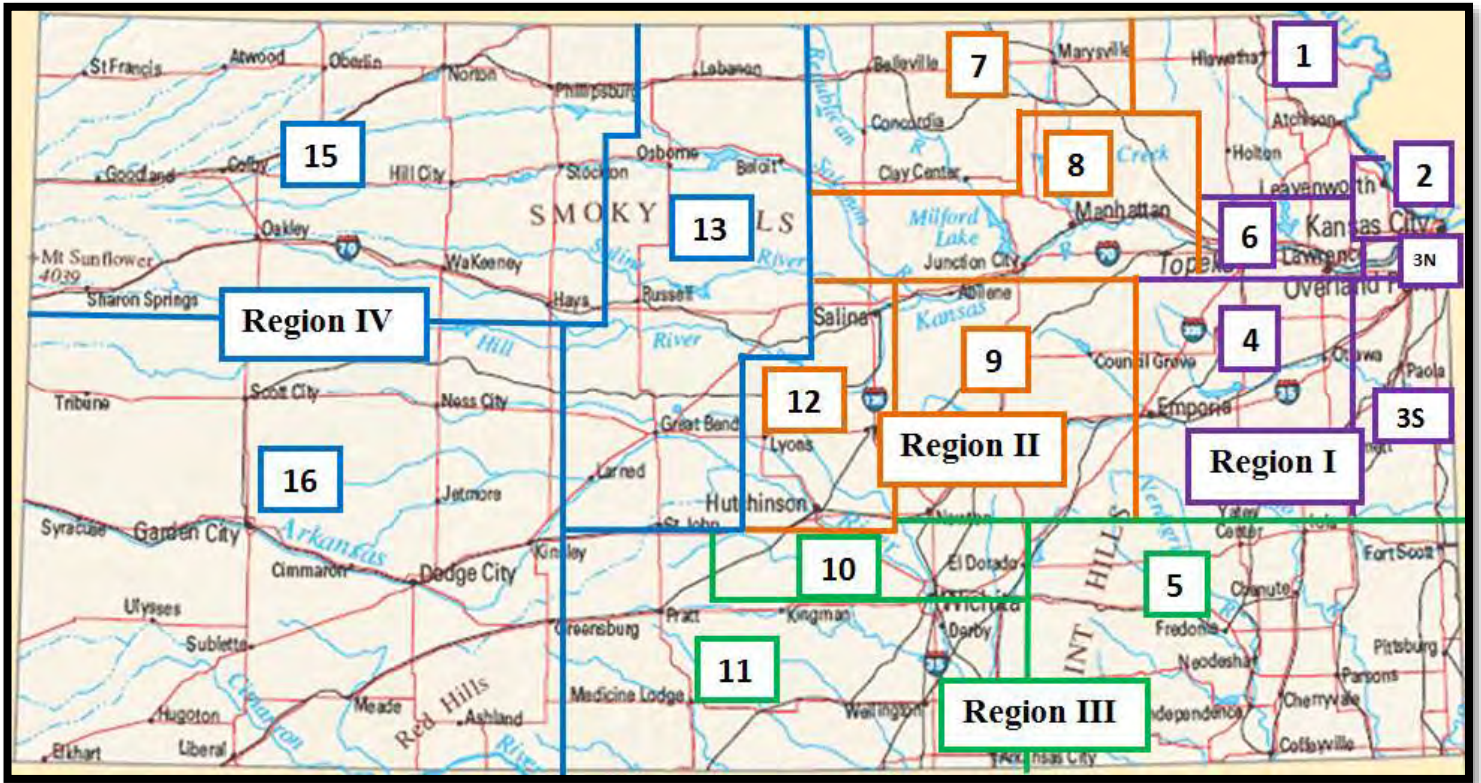
578  
 579  
 580 **The Organizational Chart and the Kansas District Regions Map will be moved to the**  
 581 **District Operations Manual.**

582  
 583 **ORGANIZATIONAL CHART**



- 600  
 601  
 602  
 603  
 604  
 605  
 606  
 607  
 608  
 609  
 610  
 611  
 612
- 1) Members of the Executive Council
  - 2) Divisions of Board of Directors - Missions, Caring Ministry, Education, Stewardship, Administration
  - 3) Examples: Evangelism Committee, Youth Committee, Family Life Committee, etc.
  - 4) Examples: Church Extension Fund Board of Managers, Scholarship Committee, etc.

# KANSAS DISTRICT REGIONS



REGION I	REGION II	REGION III	REGION IV
Circuit 1	Circuit 7	Circuit 5	Circuit 13
Circuit 2	Circuit 8	Circuit 10	Circuit 15
Circuit 3 North	Circuit 9	Circuit 11	Circuit 16
Circuit 3 South	Circuit 12		
Circuit 4			
Circuit 6			

**Resolution 18-04-03**  
*(Overture 18-04-07)*

**To Celebrate and Give Thanks to God for the 125th Anniversary of Concordia University,  
Seward, Nebraska**

1           **WHEREAS**, since its founding in 1894, the Lord of the Church has blessed Concordia University,  
2 Nebraska by empowering it to serve The Lutheran Church—Missouri Synod as an educational institution  
3 equipping students to learn, serve and lead in the Church and world; and  
4

5           **WHEREAS**, the Lord of the Church led the founders of the University to provide the funds and  
6 land to locate the institution in Seward, Nebraska so that the institution would be a blessing to the local  
7 community, the Nebraska and surrounding Districts and the entire LCMS; and  
8

9           **WHEREAS**, the Lord of the Church has blessed Concordia University, Nebraska to be the  
10 leading preparer of fulltime workers in the ministries of the LCMS, as today it places more graduates into  
11 the commissioned teaching and Director of Christian Education ministries of the church than any other  
12 institution of the Concordia University System; and  
13

14           **WHEREAS**, the Lord of the Church has blessed Concordia University, Nebraska to equip men for  
15 the pastoral ministry through its pre-seminary and other academic programs so that, historically, each  
16 year between 40 and 50 are involved in academic and spiritual preparation to study at an LCMS seminary  
17 with the result that seven (7) percent of those serving as pastors in the LCMS today are alumni of  
18 Concordia University, Nebraska; and  
19

20           **WHEREAS**, the God of all creation has blessed Concordia University, Nebraska with  
21 opportunities to equip students with a Lutheran Christian higher education for vocations of service in  
22 business, laboratories, hospitals, industry, courtrooms, government, the military, their home and the  
23 communities where they reside; and  
24

25           **WHEREAS**, the God of all wisdom and knowledge has blessed Concordia University, Nebraska  
26 by enabling it to serve the Church and world through 110 undergraduate and graduate academic  
27 programs at its campuses in Seward and Lincoln, through its high school partners and online; and  
28

29           **WHEREAS**, the God of service has blessed the Church and world through the more than 23,000  
30 alumni, sainted and living, of Concordia University, Nebraska who have walked by faith and not by sight  
31 and the hundreds of gifted and faithful faculty and staff who served these men and women during their  
32 educational studies; and  
33

34           **WHEREAS**, the God of abundance has blessed Concordia University, Nebraska through the tens  
35 of thousands of donors who have faithfully supported the University with their prayers, generous gifts and  
36 referral of students; and  
37

38           **WHEREAS**, the God of grace and mercy continues to bless Concordia University with record  
39 numbers of undergraduate and graduate students—2,757 in 2016-17. Therefore be it  
40

41           **RESOLVED**, that the 2018 Convention of the Kansas District of The Lutheran Church—Missouri  
42 Synod pause from its regular business to offer special thanksgiving and praise to almighty God for His  
43 continued blessings on Concordia University, Nebraska and to commend its students, faculty, staff and  
44 administration to His continued providential care. And be it finally  
45

46           **RESOLVED**, that the Kansas District memorialize the LCMS at its July 2019 Convention to  
47 declare Concordia's Founders Day, November 18, 2019, as a synod wide "Concordia University,  
48 Nebraska Sunday," encouraging and facilitating prayers, thanksgiving, offerings, gifts and student  
49 referrals to be given in celebration of the Lord's abundant blessings to the Church through one of its  
50 treasured universities.

**Resolution 18-04-04**  
*(Overture 18-04-11)*

**To Require Recipients of Kansas District Scholarships to Complete Financial Education Prior to Receiving Funds**

1           **WHEREAS**, the cost of higher education continues to rise, putting a strain on many future church  
2 workers and families; and

3  
4           **WHEREAS**, students are graduating with considerable educational debt, with Americans owing  
5 \$1.4 trillion dollars in 2017; students in Lutheran colleges and seminaries are similarly burdened,  
6 graduating with a typical loan balance in the mid-\$20,000 range, while the most recent round of 34  
7 applicants for Kansas District educational loan repayment grants together owe \$1,700,779 (an average of  
8 \$50,023 per applicant); and

9  
10          **WHEREAS**, the Kansas District has provided financial assistance to undergraduates and  
11 seminary students since 1998 to help ease this burden, awarding \$26,625 to 25 students for scholarships  
12 in 2017; and

13  
14          **WHEREAS**, the District would like to assist future church workers further by encouraging sound  
15 financial stewardship and decision making; therefore be it

16  
17          **RESOLVED**, that the Assistant to the President for Missions and Stewardship, in consultation  
18 with the District Business Manager, the Board of Stewardship, and the Scholarship Committee develop  
19 the approved forms of financial education; and be it further

20  
21          **RESOLVED**, that the approved financial education be manageable in scope and include basic  
22 components of financial literacy as well as principles of sound Christian stewardship; and be it finally

23  
24          **RESOLVED**, that degree-seeking recipients of Kansas District scholarships complete an  
25 approved form of financial education prior to receiving funds.

**Resolution 18-04-05**  
*(Overture 18-04-04)*

**To Encourage Congregational Training of Leaders for Ministry with Children, Youth and Adults**

1           **WHEREAS**, the LCMS seeks to sustain and revitalize Lutheran congregations through faithful  
2 preaching, administration of the sacraments, and the teaching of God’s Word through educational  
3 opportunities within congregations so the Body of Christ is built up in faith; and  
4

5           **WHEREAS**, in Matthew 19:14 Jesus says, “Let the little children come to me and do not hinder  
6 them, for to such belongs the kingdom of heaven”; and  
7

8           **WHEREAS**, Rev. C.F.W. Walther said, “You cannot use your time to better advantage than by  
9 serving well the young people of the congregation”; and  
10

11           **WHEREAS**, only 47% of children baptized in 2000 did get confirmed as a youth according to  
12 LCMS statistics; and  
13

14           **WHEREAS**, quality congregational Christian education promotes lifelong discipleship, faithfulness  
15 to the Scriptures and Lutheran Confessions, love, humility, greater understanding of vocation and the  
16 sharing of Jesus Christ with those who do not yet know Him as Lord and Savior; therefore be it  
17

18           **RESOLVED**, that pastors, commissioned ministers, parents and active laity be commended for  
19 their ongoing work in providing life-span congregational Christian education and encouraged to grow this  
20 significant work of the church; and be it further  
21

22           **RESOLVED**, that the Kansas District Board of Directors address how best to support  
23 congregational Christian education for children, youth, and adults as vital for individual faith growth and  
24 for future growth of Christ’s church; and be it further  
25

26           **RESOLVED**, that the Kansas District Board of Directors address how best to support the training  
27 of pastors, commissioned ministers, and lay people in circuits and regions of the District through  
28 resources, ongoing educational opportunities, and conferences specific to the areas of children, youth,  
29 and family Christian education; and be it further  
30

31           **RESOLVED**, that Kansas District Board of Directors address how best to provide resources to  
32 meet the spiritual needs of children, youth, and adults in their congregations and communities; and be it  
33 finally  
34

35           **RESOLVED**, the congregations of the Kansas District pray for the children, teens, and parents of  
36 our congregations and communities that they may grow to greater depth of knowledge of the Gospel and  
37 through the gift of the Holy Spirit, receive faith and salvation.



**Resolution 18-04-06**  
(Overtures 18-04-05, 18-04-06)

**To Emphasize Cheerful and Generous Giving in Daily Vocations**

1           **WHEREAS**, all Christians have a calling from God to serve as His hands on earth, accomplishing  
2 His purposes through their vocations in life (e.g., parent, employee, citizen, neighbor); and everything in  
3 the world belongs to the Lord—the earth and those who dwell therein (Ps. 24:1); and  
4

5           **WHEREAS**, operating effectively in one’s vocation requires attention to vocational duties, which  
6 are addressed in Scripture and summarized the Table of Duties in the *Small Catechism*; and  
7

8           **WHEREAS**, God provides for us richly and daily, entrusting us to manage His resources for the  
9 good of our neighbor and the proclamation of the Gospel; (Matt. 6:9-11; Matt. 6:31-33; Matt. 25:14-30;  
10 Luke 16:1-13); and  
11

12           **WHEREAS**, our Lord, through the Apostle Paul, establishes a key principle for using those  
13 resources in 2 Cor. 9:7: “Each one must give as he has decided to give, not reluctantly or under  
14 compulsion, for God loves a cheerful giver”; and  
15

16           **WHEREAS**, Scripture encourages regular proportional first-fruits giving (Deut. 18:4; Prov. 3:9; 1  
17 Cor. 16:2); and  
18

19           **WHEREAS**, “Christian Stewardship is the free and joyous activity of the child of God and God’s  
20 family, the church, in managing life and all of life’s resources for God’s purposes” (2001 Res. 2-07A), and  
21

22           **WHEREAS**, Synod has affirmed the important relationship between vocation and stewardship in  
23 Resolution 10-04 of the 2015 Synod Convention. Synod has affirmed the importance of cheerful and  
24 voluntary giving in Resolution 10-03 of the 2015 Synod Convention; therefore be it  
25

26           **RESOLVED**, that the Assistant to the President for Missions and Stewardship identify, develop,  
27 and make available suitable resources for achieving this purpose, be it further  
28

29           **RESOLVED**, that LCMS congregations emphasize vocation and the Table of Duties as part of  
30 their stewardship education in the next triennium; and be it finally  
31

32           **RESOLVED**, that LCMS congregations emphasize cheerful and generous giving as part of their  
33 stewardship education in the next triennium.

**Resolution 18-04-07**  
*(Overture 18-04-03)*

**To Encourage Colloquy or Other Educational Tracks for Non-Rostered Teachers to be Inculcated into Lutheran Theology**

1           **WHEREAS**, members of the Lutheran Church-Missouri Synod seek to provide a sound learning  
2 environment that reflects both quality teaching and sound doctrine for adults and especially for  
3 adolescents and young children, and  
4

5           **WHEREAS**, there are 45 early childhood development centers and 14 elementary schools in the  
6 Kansas District of the Lutheran Church-Missouri Synod, and  
7

8           **WHEREAS**, a consistent doctrinally sound learning environment is best provided by leadership,  
9 faculty and staff that have formal training in Lutheran doctrine, and  
10

11           **WHEREAS**, an insufficient number of students pursuing professional church worker roster status  
12 are being graduated by the Concordia University System to satisfy current requests for placement, and  
13

14           **WHEREAS**, many leadership, instructional and support positions in Kansas early childhood  
15 development centers and Kansas Lutheran schools are filled by persons without Lutheran background or  
16 Lutheran Church-Missouri Synod roster status, and  
17

18           **WHEREAS**, the District Scholarship Committee has approved the use of District funds as they  
19 are available for the purposes of continuing education of Lutheran day school teachers, including  
20 colloquy, to achieve rostered status, therefore be it  
21

22           **RESOLVED**, that all congregations in the Kansas District of the Lutheran Church-Missouri Synod  
23 and especially those participating in or supporting early childhood development centers and/or Lutheran  
24 day schools be encouraged to provide non-Lutheran workers with information about and training in the  
25 doctrines of the Lutheran Church-Missouri Synod, and be it further  
26

27           **RESOLVED**, that all congregations in the Kansas District of the Lutheran Church-Missouri Synod  
28 and especially those participating in or supporting early childhood development centers and/or Lutheran  
29 day schools be encouraged to provide non-rostered Lutheran workers with support, including funding, to  
30 achieve rostered status of Lutheran early childhood development center directors, Lutheran school  
31 teachers and administrators via colloquy or other educational tracks, and therefore finally be  
32

33           **RESOLVED**, that the Kansas District of the Lutheran Church-Missouri Synod provide guidance  
34 and/or financial resources to assist congregations in their efforts to promote rostered status for all  
35 Lutheran early childhood development center directors, Lutheran school teachers and administrators.

**Resolution 18-04-08**  
*(Overture 18-04-10)*

**To Encourage Support for the Proposed Startup of Concordia Academy:  
A Lutheran Liberal Arts Education in Wichita, Kansas**

1           **WHEREAS**, the Scriptures and the Lutheran Confessions command and commend education  
2 that shapes students morally as well as intellectually, preparing them to love God and serve their  
3 neighbors:  
4 “Fathers, do not provoke your children to anger, but bring them up in the discipline and instruction of the  
5 Lord” (Ephesians 6:4); and, “Finally, brothers, whatever is true, whatever is honorable, whatever is just,  
6 whatever is pure, whatever is lovely, whatever is commendable, if there is any excellence, if there is  
7 anything worthy of praise, think about these things. What you have learned and received and heard and  
8 seen in me—practice these things, and the God peace will be with you” (Philippians 4:8-9); and,  
9

10           **WHEREAS**, if we desire capable and qualified people for both the civil and spiritual realms we  
11 must spare no effort, time, and expense in teaching and educating our children to serve God and the  
12 world (*Large Catechism* I 172-173); and,  
13

14           **WHEREAS**, the LCMS in Convention demonstrated its continued commitment toward Lutheran  
15 schools by resolving to encourage and strengthen the Lutheran ethos of our schools (Res 8-01A), to  
16 recruit and equip Lutheran administrators for our schools (8-02), to support the quality and sustainability  
17 of Lutheran schools (8-03A), and to preserve the religious freedom we enjoy in our Lutheran schools (8-  
18 04); and,  
19

20           **WHEREAS**, the need for pastors and church workers in our Church is great, along with the need  
21 for strong and courageous lay leaders in the congregations of our Kansas District; and,  
22

23           **WHEREAS**, a Lutheran liberal arts education has proven to be effective in this regard, and is a  
24 growing trend in our Synod and beyond; and,  
25

26           **WHEREAS**, the mission of Concordia Academy is:  
27 “To form students in faith, hope, and love, by cultivating wisdom and nourishing their souls in the pursuit  
28 of truth, goodness, and beauty, according to the Word of God and the Lutheran Confessions”; and,  
29

30           **WHEREAS**, the Kansas District Board of Directors has given its blessing to the feasibility study in  
31 the proposed startup of Concordia Academy in the city of Wichita; therefore be it  
32

33           **RESOLVED**, that pastors and members of our congregations in the Kansas District be  
34 encouraged to pray for this new endeavor; and, if so led by the Holy Spirit, to support it financially.

**Resolution 18-04-09**  
*(Overtures 18-04-08, 18-04-09)*

**To Study and Recommend Strategies in the Advancement of Congregation-based Older Adult Ministries in the Kansas District LCMS**

- 1           **WHEREAS**, the Kansas District of the Lutheran Church-Missouri Synod is blessed by
- 2 congregational membership of active saints, age 65 and beyond, comprising 25% of its total membership,
- 3 with that percentage increasing daily; and,
- 4
- 5           **WHEREAS**, older adults today are generally healthier and have an increasing amount of time and
- 6 treasure; and,
- 7
- 8           **WHEREAS**, older adults, as God’s children, are seeking opportunities to make a significant
- 9 impact upon the lives of others in the name of Jesus Christ; and,
- 10
- 11           **WHEREAS**, older adults are to be looked upon as a special blessing God gives to the church to
- 12 be actively used in the mission of the church; therefore be it
- 13
- 14           **RESOLVED**, that the Kansas District President be charged to appoint a task force to examine
- 15 strategies in support of congregation-based ministries with older adults; and be it finally
- 16
- 17           **RESOLVED**, that the appointed task force offer their report to District congregations, including
- 18 resources needed to implement enhanced older adult ministry within one year following the appointment
- 19 of the task force.

**OMNIBUS RESOLUTION A**

**WHEREAS**, the District has numerous offices, boards, and committees; and

**WHEREAS**, proposals related to the responsibilities of such administrative units should ordinarily be directed to them; therefore be it

**RESOLVED**, that the following memorials be referred to the listed administrative unit:

<b><u>Memorial</u></b>	<b><u>Title</u></b>	<b><u>Board or Commission</u></b>
Ov. 18-03-10	To Allow Licensed Lay Deacons (LLDs) to Preach and Do Sacramental Ministry on Emergency and/or Occasional Basis in Congregations Where a Called and Ordained Pastor Is Present	Office of the District President
Ov. 18-03-12a	To Move the Kansas District Convention to April	Kansas District Board of Education

**OMNIBUS RESOLUTION C**

**WHEREAS**, the floor committees have considered all memorials assigned to them and have concluded, for various reasons, that certain memorials should be declined; therefore be it

**RESOLVED**, that the following memorials be respectfully declined for the reasons given:

<b><u>Memorial</u></b>	<b><u>Title</u></b>	<b><u>Reason</u></b>
Ov. 18-04-12	To Encourage Healthy Food and Beverage Environments at District Sponsored Events	Insufficient information
Ov. 18-04-13	To Improve the Process of Calling Pastors	Being handled through proper channels
Ov. 18-01-10	To Affirm Local Word and Sacrament Ministry as a Priority in Mission Grant Funding	Action already taken